

EXISTING BIKE LANE ON BANNATYNE TO REMAIN

ADD BIKE BOX AND SIGNS DIRECTING BICYCLE TRAFFIC TO McDERMOT

APPROXIMATE LOCATION OF FIRE HYDRANT (TYP)

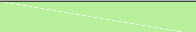




ECOLE SACRE COEUR

EXISTING BIKE LANE ON McDERMOT TO REMAIN

ADD BIKE BOX AND SIGNS DIRECTING BICYCLE TRAFFIC TO BANNATYNE

HUGH JOHN MACDONALD SCHOOL

**Legend**

- Bike Lane 
- Conflict Point 
- Parking Zone 
- Loading Zone 
- Bus Stop 

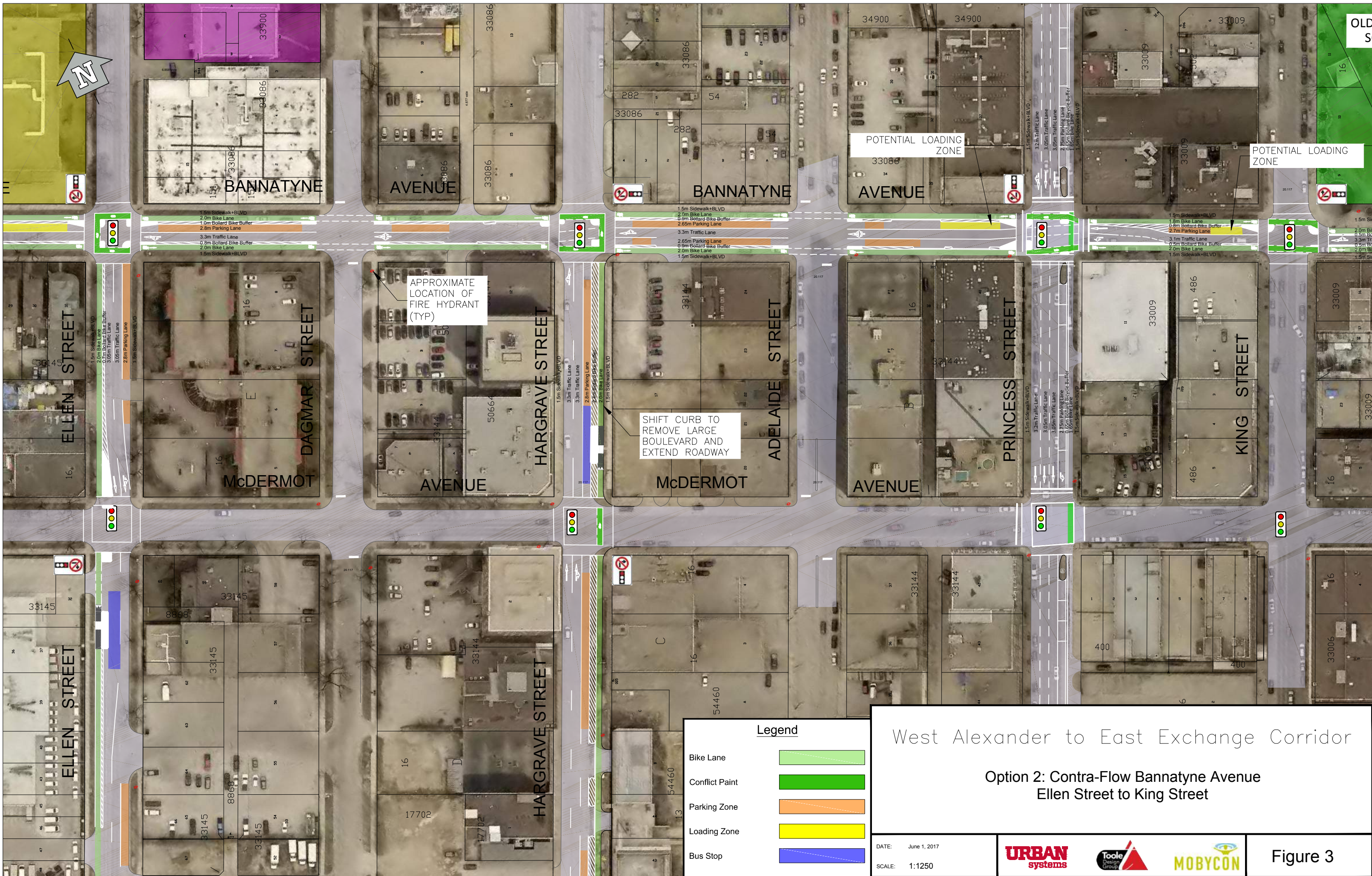
West Alexander to East Exchange Corridor  
 Option 2: Contra-Flow Bannatyne Avenue  
 Sherbrook Street to Juno Street

DATE: June 1, 2017  
 SCALE: 1:1250







1.5m Sidewalk+BLVD  
2.0m Bike Lane  
1.0m Bollard Bike Buffer  
2.8m Parking Lane  
3.3m Traffic Lane  
0.8m Bollard Bike Buffer  
2.0m Bike Lane  
1.5m Sidewalk+BLVD

1.5m Sidewalk+BLVD  
2.0m Bike Lane  
0.9m Bollard Bike Buffer  
2.65m Parking Lane  
3.3m Traffic Lane  
2.65m Parking Lane  
0.9m Bollard Bike Buffer  
2.0m Bike Lane  
1.5m Sidewalk+BLVD

1.5m Sidewalk+BLVD  
1.8m Bike Lane  
0.8m Bollard Bike Buffer  
2.7m Parking Lane  
3.1m Traffic Lane  
0.5m Bollard Bike Buffer  
2.0m Bike Lane  
1.5m Sidewalk+BLVD






APPROXIMATE LOCATION OF FIRE HYDRANT (TYP)

SHIFT CURB TO REMOVE LARGE BOULEVARD AND EXTEND ROADWAY

POTENTIAL LOADING ZONE

POTENTIAL LOADING ZONE

**Legend**

- Bike Lane 
- Conflict Point 
- Parking Zone 
- Loading Zone 
- Bus Stop 

West Alexander to East Exchange Corridor

Option 2: Contra-Flow Bannatyne Avenue  
Ellen Street to King Street

DATE: June 1, 2017  
SCALE: 1:1250



Figure 3








OLD MARKET SQUARE

ACCESSIBLE LOADING REMOVED

TRANSITION TO DOWNTOWN BIKE LANES VIA ARTHUR STREET

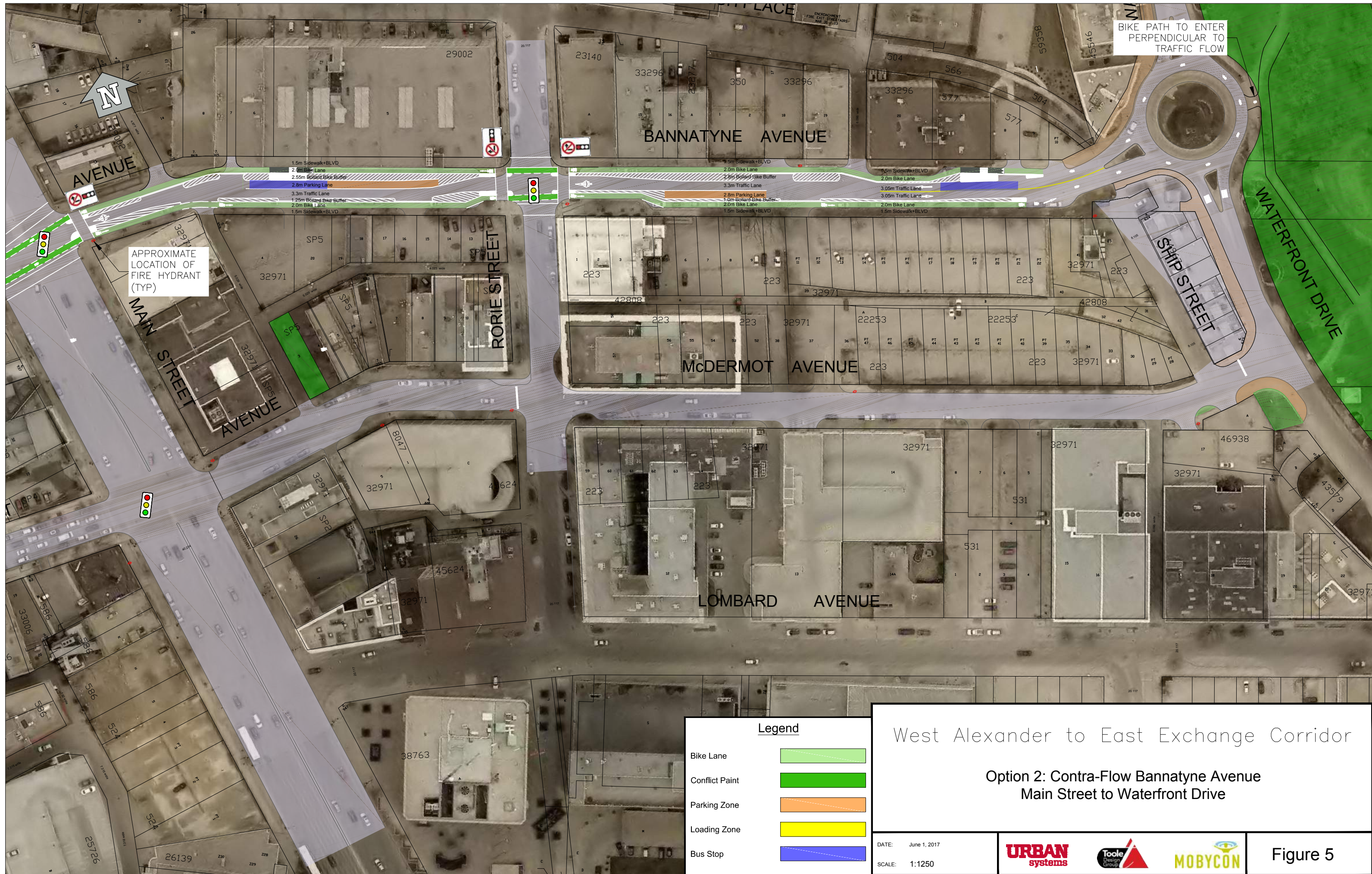
APPROXIMATE LOCATION OF FIRE HYDRANT (TYP)

**Legend**

- Bike Lane 
- Conflict Point 
- Parking Zone 
- Loading Zone 
- Bus Stop 

West Alexander to East Exchange Corridor  
 Option 2: Contra-Flow Bannatyne Avenue  
 Princess Street to Main Street

DATE: June 1, 2017  
 SCALE: 1:1250



BIKE PATH TO ENTER PERPENDICULAR TO TRAFFIC FLOW

APPROXIMATE LOCATION OF FIRE HYDRANT (TYP)

**Legend**

- Bike Lane
- Conflict Point
- Parking Zone
- Loading Zone
- Bus Stop

West Alexander to East Exchange Corridor

**Option 2: Contra-Flow Bannatyne Avenue  
Main Street to Waterfront Drive**

DATE:	June 1, 2017
SCALE:	1:1250

Figure 5