

Intersection Improvement: Sturgeon Road, Silver Avenue and Murray Park Road Roundabout

Welcome



Public Information Session

WHY IS AN INTERSECTION IMPROVEMENT NEEDED?



Traffic volumes for Sturgeon Road, Silver Avenue and Murray Park Road exceed the capacity of the existing 4-way stop controlled intersection resulting in significant delays and long line-ups (especially during the morning and afternoon peak hours). This results in increased vehicle emissions, fuel consumption and driver frustration.

Public Information Session
Sturgeon Road, Silver Avenue and
Murray Park Road Roundabout




WHAT IS A ROUNDABOUT ?

Splitter and **centre island**
slow vehicle speed for safe
pedestrian crossings



Signed and marked
pedestrian crosswalks
on all approaches

One way traffic
direction through the
roundabout 



Yield at the entry giving the
right-of-way to traffic already
in the roundabout

A roundabout is a type of
circular intersection with yield
controls for entering traffic,
islands on the approaches and
appropriate roadway
curvature to reduce vehicle
speed

Public Information Session
Sturgeon Road, Silver Avenue and
Murray Park Road Roundabout



WHY A ROUNDABOUT AND NOT A TRAFFIC SIGNAL ?

1. Collision severity is generally higher for traffic signals as compared to roundabouts due to lower vehicle operating speeds for roundabouts
2. Roundabouts are more environmentally friendly - vehicle delays and stops are greater for signals resulting in higher vehicle emissions and fuel consumption
3. Traffic signals result in higher noise levels associated with vehicles starting and stopping
4. Roundabouts offer opportunities for enhanced neighbourhood aesthetics and gateway features
5. Signals are mechanical devices that require maintenance and may malfunction

Public Information Session
Sturgeon Road, Silver Avenue and
Murray Park Road Roundabout



ROUNABOUT FEATURES

- A roundabout typically has a larger radius and is utilized to increase the capacity of an intersection
- A “truck apron” is used for larger vehicles to navigate the intersection
- A right-turn bypass is used to improve traffic operations and to accommodate truck movements
- Splitter islands provide pedestrian refuge



Public Information Session
Sturgeon Road, Silver Avenue and
Murray Park Road Roundabout



WHY CONSIDER A ROUNDABOUT ?

- **Reduced Congestion**
- **Improved Safety**
- **Environment**

Reduced Congestion

- Efficient during rush hour and off peak times
- Less delays and vehicle line-ups

Improved Safety

- Reduction in fatal and injury collisions by as much as 75% *
- Fewer conflict points
- Slower speeds
- Refuge Islands allowing pedestrians to cross only one lane of traffic at a time

Environment

- Less pollution due to fewer stops and less idle time
- Quieter operation than stop sign or traffic signals due to fewer vehicle stops
- Aesthetically pleasing

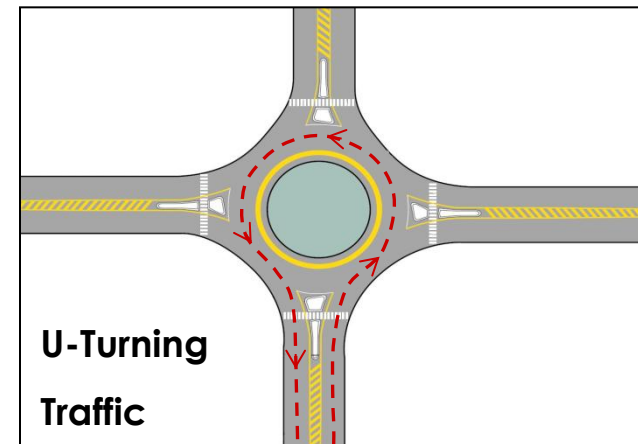
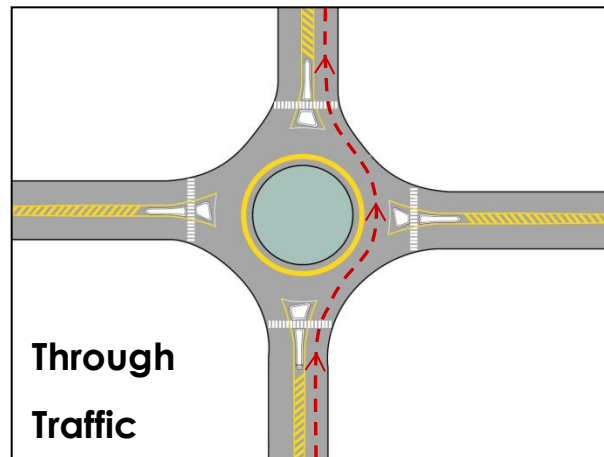
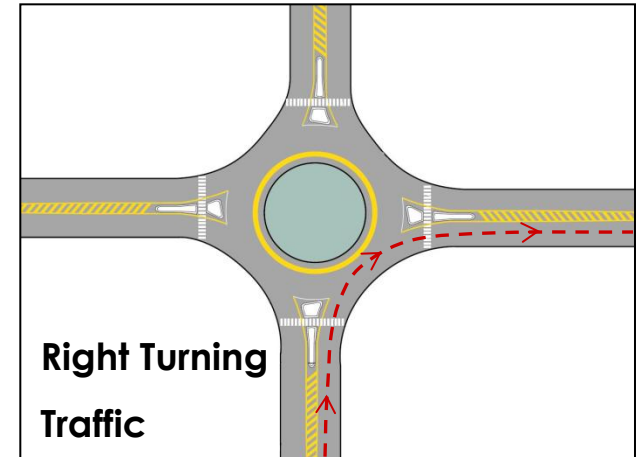
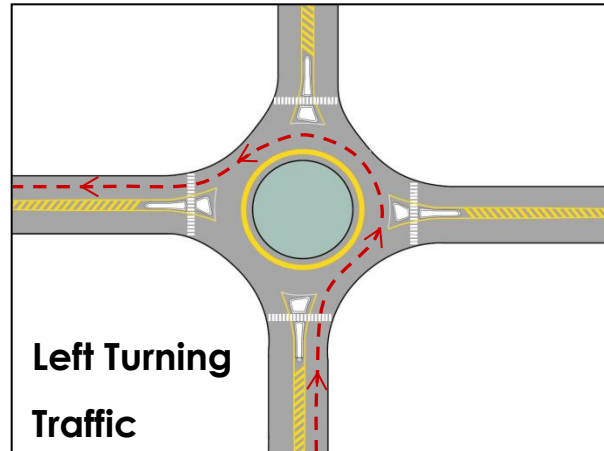
* US Department of Transportation, Federal Highway Administration, Publication No. FHWA-RD-00-067, Roundabouts: An Information Guide

Public Information Session
Sturgeon Road, Silver Avenue and
Murray Park Road Roundabout



HOW TO DRIVE A ROUNDABOUT

1. As you approach a roundabout there will be a yield sign - slow down, watch for pedestrians and cyclists, and be prepared to stop if necessary.
2. When you enter, yield to circulating traffic on the left, but do not stop if it is clear.
3. The roundabout will have One Way signs mounted in the center island. They help guide traffic and indicate that you must drive to the right of the center island.
4. Upon passing the street prior to your exit, turn on your right turn signal and watch for pedestrians and cyclists as you exit.
5. Left turns are completed by traveling around the center of the island.



Public Information Session
Sturgeon Road, Silver Avenue and
Murray Park Road Roundabout



HOW TO WALK A ROUNDABOUT



Use the crosswalk to the splitter island

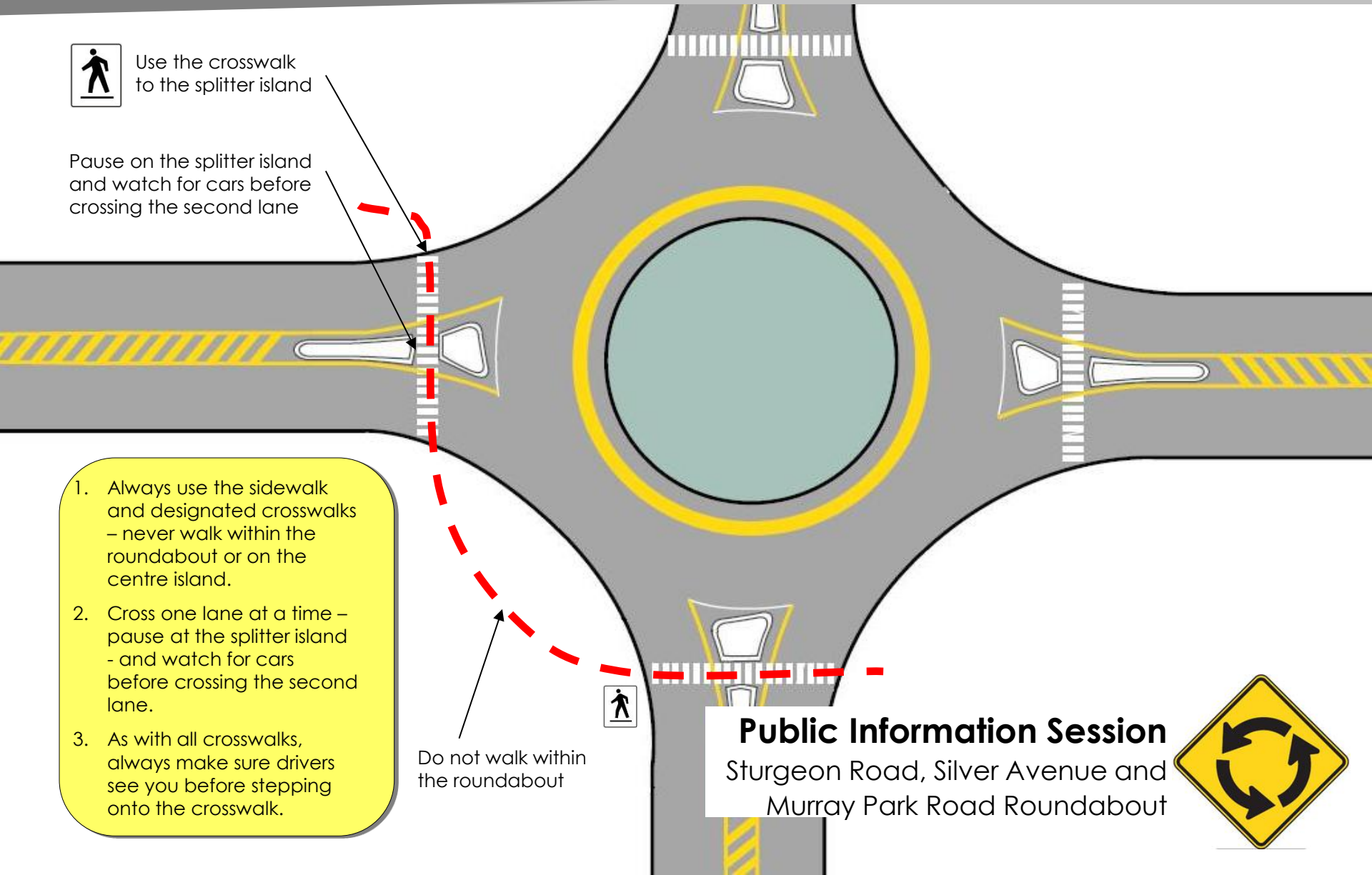
Pause on the splitter island and watch for cars before crossing the second lane

1. Always use the sidewalk and designated crosswalks – never walk within the roundabout or on the centre island.
2. Cross one lane at a time – pause at the splitter island - and watch for cars before crossing the second lane.
3. As with all crosswalks, always make sure drivers see you before stepping onto the crosswalk.

Do not walk within the roundabout



Public Information Session
 Sturgeon Road, Silver Avenue and
 Murray Park Road Roundabout



Sturgeon Road, Silver Avenue and Murray Park Road Roundabout

Location:

Intersection of Sturgeon Road, Silver Avenue and Murray Park Road

Features:

Reconstruction of intersection

Landscaping in Center Island

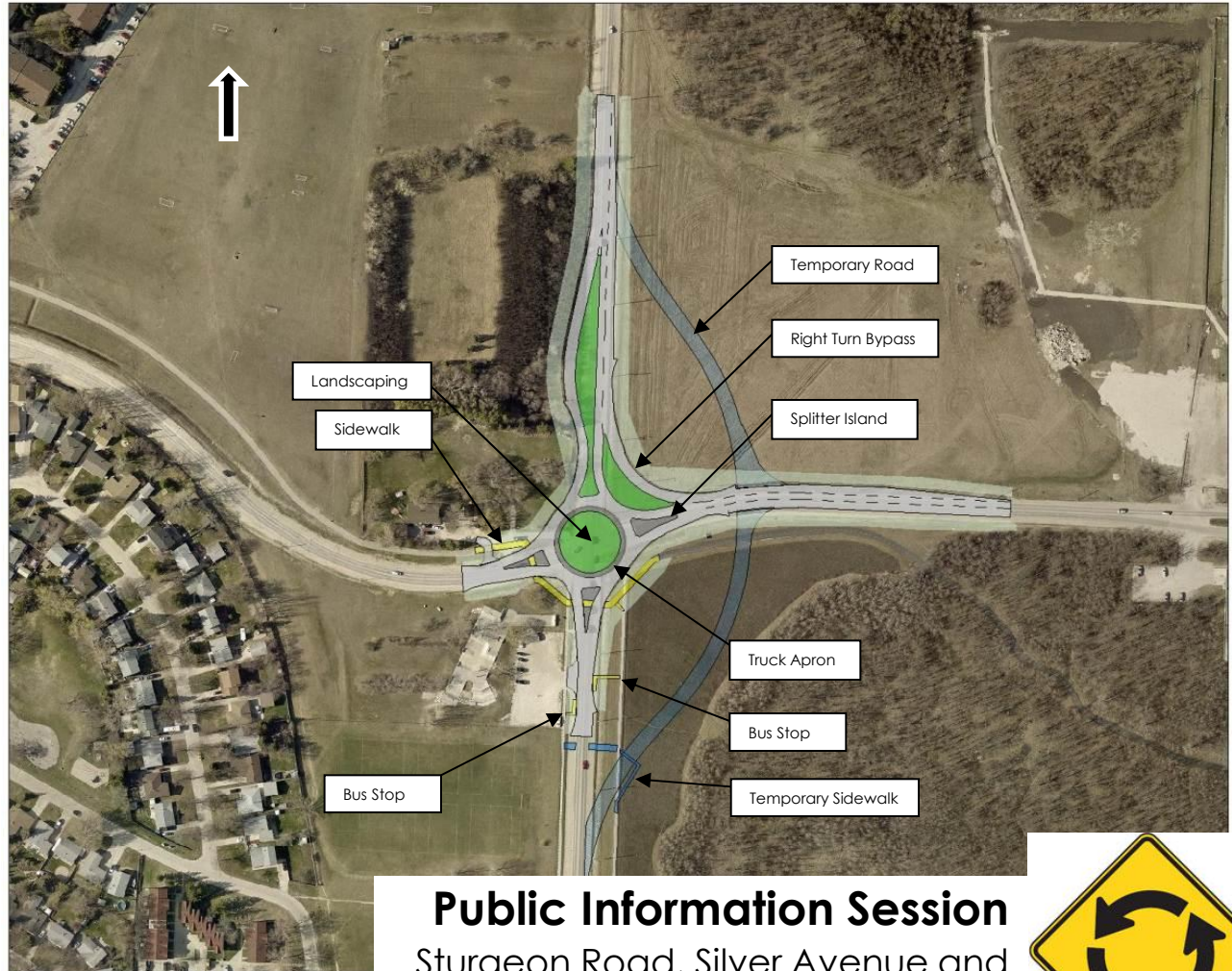
Sidewalk / Path Reconstruction

New Street Lighting

Construction Period:

August 2015 to November 2015 and

May 2016 to July 2016



Public Information Session
Sturgeon Road, Silver Avenue and
Murray Park Road Roundabout

