

### Background

Empress Street and Empress Street East are regional streets and truck routes that are in need of renewal and rehabilitation. The Empress Street Overpass over Portage Avenue is in need of major rehabilitation.

The City of Winnipeg (City) conducted a study in 2016-2017 to plan for complete roadway and overpass improvements on these streets, while taking an opportunity to create new and also improve existing cycling and pedestrian infrastructure in the study area.

Detailed design of the project has now been finalized with the first phase of construction now underway. Completion of the project is anticipated by 2020.

### Public Engagement

The first phase of public engagement took place in 2016 and 2017 with a series of stakeholder meetings and a public open house. The second phase of public engagement launched in September 2018 with a Stakeholder Come & Go session where the City provided an update on the

project and presented the final design. Eleven stakeholders attended the event.

A Public Open House was held on October 10, 2018 at CF Polo Park Centre Court where the City presented the final design for the road, cycling, and pedestrian infrastructure improvements, and the construction timeline. Sixteen (16) people completed comment forms. An online survey was open from September 26, 2018 to October 25, 2018. A total of 19 surveys were submitted.

### Promotion

The Public Open House was promoted using the following methods:

- Email invitations sent to 74 stakeholders on September 27, 2018
- Posters/invitations hand delivered to 338 residents, businesses and community centres on September 29, 2018
- Advertisement in the Canstar Metro newspaper – September 26, 2018
- Advertisement in The Winnipeg Free Press newspaper – September 29, 2018
- Advertisement in The Leaf newspaper - October 2019
- City of Winnipeg webpage update – September 26, 2018
- News release - September 26, 2018
- Facebook posts with over 20,000 followers
- Twitter posts with over 88,000 followers
- City of Winnipeg public engagement newsletter with over 5,500 recipients



Stakeholder Come & Go Session - September 24, 2018

Technique	Date	Description
Webpage Updated	September 26, 2018	Webpage launched: <a href="http://winnipeg.ca/empress">winnipeg.ca/empress</a>
Stakeholder Come & Go Session	September 24, 2018	201 Portage Conference Centre with 11 participants
Survey	September 26 to October 25, 2018	Online and hard copy 19 responses collected
Public Open House	October 10, 2018	CF Polo Park Centre Court

To learn more about the Empress Street and Overpass Reconstruction and Rehabilitation project, please visit [winnipeg.ca/empress](http://winnipeg.ca/empress)

## What We Heard

The following input was received at the Stakeholder Come & Go session:

- Requests to ensure adequate signage is provided during construction for customers to access local businesses
- Praise and excitement for the project to be delivered

The following information was gathered from the Public Open House and online survey:

- The most common way that participants at the open house heard about the event was by word of mouth, walking through the mall, and the email invitation. Forty-two percent (42%) of the online participants heard about the project from the City of Winnipeg website, followed by Facebook and Twitter (26%).
- Feedback from both the in-person and online events indicated that the majority of the interest in the project came from people that travel through the area, followed by people who are interested in pedestrian and cycling routes, and people who visit the area, and then by residents that live nearby the site.
- Ninety-five percent (95%) of the people who participated in the online survey were able to find the information they needed.
- Ninety-four percent (94%) of the participants who attended the open house event and completed a comment form indicated that they had the opportunity to talk and/or ask questions of the City and consultant staff.



Public Open House - October 10, 2018

- The feedback collected at the in-person event and the online survey mostly provided positive comments regarding the addition of bike lanes, pedestrian routes and road improvements, and that it was an informative event. (Refer to Appendix D for all comments).

## Next Steps

Construction will continue in 2019 and is expected to be completed in 2020.

## Appendices

Appendix A – Stakeholder Come & Go Session Comment Form Results

Appendix B – Public Open House Invitation

Appendix C – Presentation Boards

Appendix D – Open House Comment Form and Online Survey Data and Results

**Appendix A – Stakeholder Come & Go Session Comment Form Results**

Empress Street and Overpass Reconstruction and Rehabilitation

**Stakeholder Come and Go Session - September 24th, 2018**

Comment Form Responses - 3 forms received

1. What is your interest in this project?

I live nearby	I travel through the area	I work in the area	I visit the area	Business Owner in the area	Interest in pedestrian and cycling improvements	Interest in road improvements	Interest in work surrounding waterways	Other:
	1		1		1		1	2

Responses for 'Other': Property owner, work in active transportation

2. I had an opportunity to talk to and/or ask questions of the City of Winnipeg and consultant staff

Strongly Agree	Agree	Neutral	Disagree	Strongly Disagree
3				

3. I understand the reasons for this project

Strongly Agree	Agree	Neutral	Disagree	Strongly Disagree
3				

4. Please provide any comments you may have regarding today's session

- Please ensure adequate signage is provided when Empress Street East is closed so as to ensure people know how to get to Chapters, Montanas, Home Depot and more. Signage should be on St. James, Jack Blick, Maroons and ST. Matthews . Shindico can provide signage locations at the former stadium site.
- I was excited when I first heard about the project and I'm glad that the initial vision made it into the final proposal! Well done
- I found it very helpful and am very excited to see this project move forward!

**Appendix B – Public Open House Invitation**

## Empress Street and Overpass Reconstruction and Rehabilitation Open House

The City of Winnipeg is renewing and rehabilitating Empress Street, Empress Street East, Eastway, Westway, and St. John Ambulance Way between Portage Avenue and St. Matthews Avenue. This project is anticipated to finish in summer 2020. Key opportunities and considerations include:

- Roadway & Overpass Improvements
- Improved Intersection Design
- Accessible Pedestrian & Cycling Routes
- Greenspace Features
- Existing Natural Habitats
- Creek & Riverbank Stabilization



- *Do you travel in the Polo Park area?*
- *Do you anticipate using this area for cycling, walking, or commuting?*

***Construction is underway.  
Come and see the final design  
& construction timeline!***

**October 10, 2018**  
**CF Polo Park Shopping Centre**  
**Centre Court**  
**1485 Portage Ave.**  
**Come & Go:**  
**4p.m. to 7p.m.**

Questions? Contact:

Scatliff+Miller+Murray 204-927-3444 [winnipeg@scatliff.ca](mailto:winnipeg@scatliff.ca)

Those who require alternate formats or ASL interpretation in order to participate should contact Cheryl Dixon by October 3, 2018 at [cdixon@scatliff.ca](mailto:cdixon@scatliff.ca) or 204-927-3444.

For more information, visit us online at: [winnipeg.ca/empress](http://winnipeg.ca/empress)

**Appendix C – Public Open House Presentation Boards**

## Empress Street and Overpass Reconstruction and Rehabilitation



**Empress Street** and **Empress Street East** are regional streets and truck routes that are in need of renewal and rehabilitation.

The City of Winnipeg conducted a study in 2016/2017 to plan for complete roadway and overpass improvements on these streets. Detailed design is now finalized and construction is underway and will continue until 2020.

### Goals of the project include:

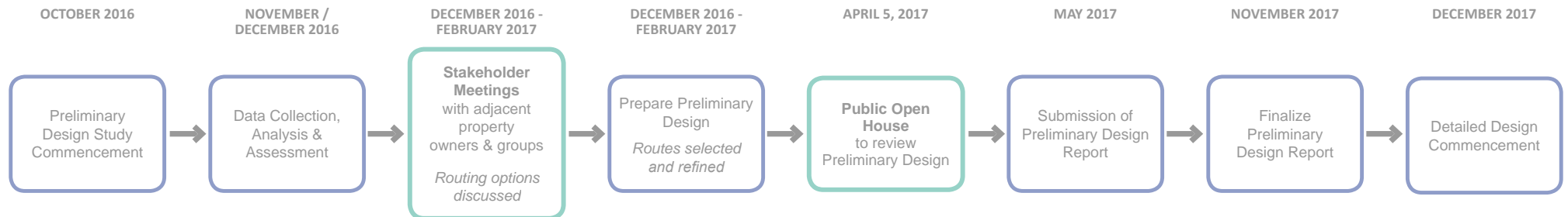
- Renew and rehabilitate existing infrastructure
- Streamline vehicle accommodation based on current traffic flow patterns and volume
- Stabilize Assiniboine River and Omand's Creek embankments
- Create new, and improve existing, cycling and pedestrian infrastructure
- Improve accessibility for walking and cycling

### *Please participate today by:*

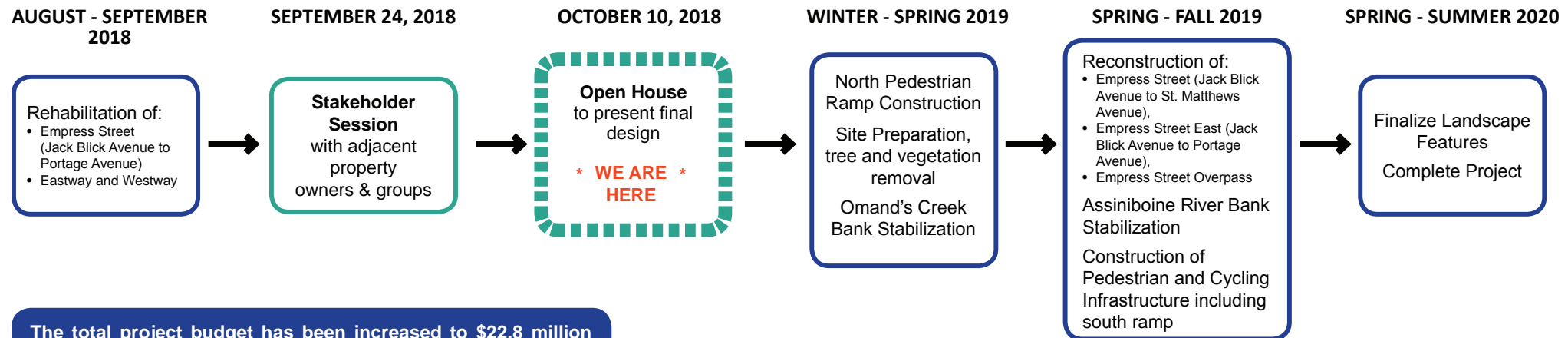
1. Viewing the story boards about the study
2. Asking questions and talking with the engineers, landscape architects, planners & City of Winnipeg staff
3. Providing feedback on a comment form about this event



## Preliminary Design Study 2016-2017



## Detailed Design & Construction 2017-2020



The total project budget has been increased to \$22.8 million with the addition of the universally accessible pedestrian routes from Portage Avenue to the Empress Overpass.

### A. Time to Renew the Roads, Overpass, and Sidewalks in the Project Area

- Existing roadway and sidewalk pavements are in poor condition and are in need of renewal.
- Empress Overpass requires structural maintenance to extend its lifespan.



Roads in need of renewal



Existing overpass and piers in need of repairs



Sidewalks in need of repairs

### B. Creek and Riverbank Stabilization

- Riverbanks along the Assiniboine River near St. John Ambulance Way and along Omand's Creek have a history of slope failures and are showing signs of instability.
- Slope stabilization work is required to accommodate roadwork and mitigate risk of future slope failures.



Omand's Creek bank in need of stabilization

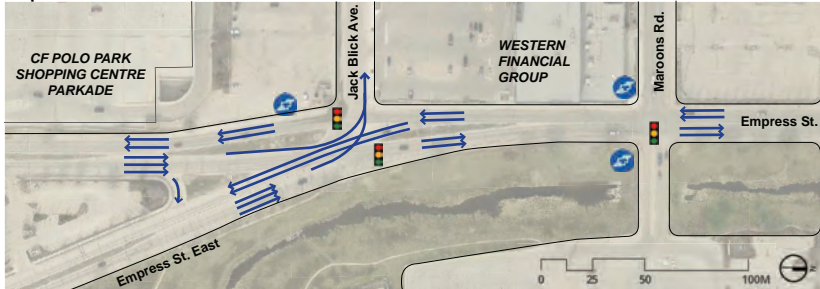
Assiniboine River bank in need of stabilization

### C. Traffic - Accommodate Current and Future Needs

- The street network in the study area was designed to accommodate large traffic volumes generated by public events at the former Winnipeg Arena and Winnipeg Stadium.
- Some streets in the study area now have excess capacity now that the Winnipeg Arena and Winnipeg Stadium are no longer located in the area.
- Improve the existing road network by reconfiguring traffic circulation to meet current and projected needs.

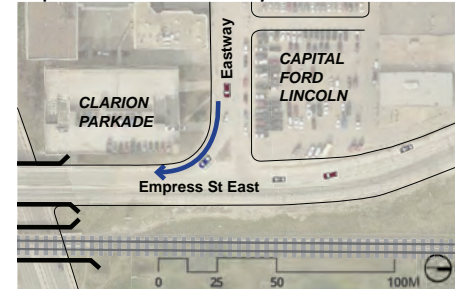
### D. Intersections Need Improvements

Empress Street East at Jack Blick



- Vehicular circulation in the existing 'Y' intersection at Empress Street East, Empress Street and Jack Blick Avenue is unconventional; reconfiguring intersection geometry will help improve navigation.
- Pedestrians are currently unable to cross the intersection in the east-west direction at the traffic signals.
- Reducing the amount of vehicle lanes will help accommodate pedestrian movement.

Empress Street East at Eastway



- It is difficult to see approaching vehicles from Eastway to Empress Street East.
- Opportunity to enhance safety and improve merging at this intersection.

### E. Creating More Inclusive Infrastructure for Pedestrians and Cyclists

- Current pedestrian and cycling infrastructure in the study area are not well connected to the City's sidewalk and cycling network.
- There are a number of locations where worn paths indicate a high demand but no infrastructure exist to accommodate.
- Opportunity to enhance connections to the surrounding area by incorporating new bicycle and pedestrian paths consistent with the City's Pedestrian and Cycling Strategies.



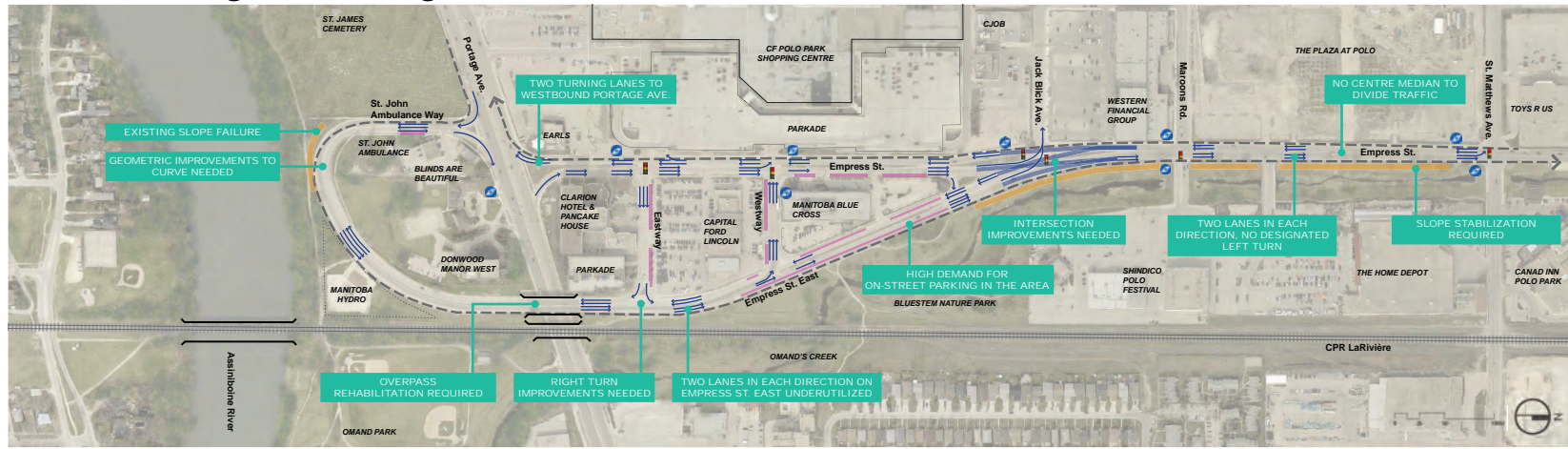
Desire lines evident by worn path



No cycling infrastructure

# EXISTING CONDITIONS

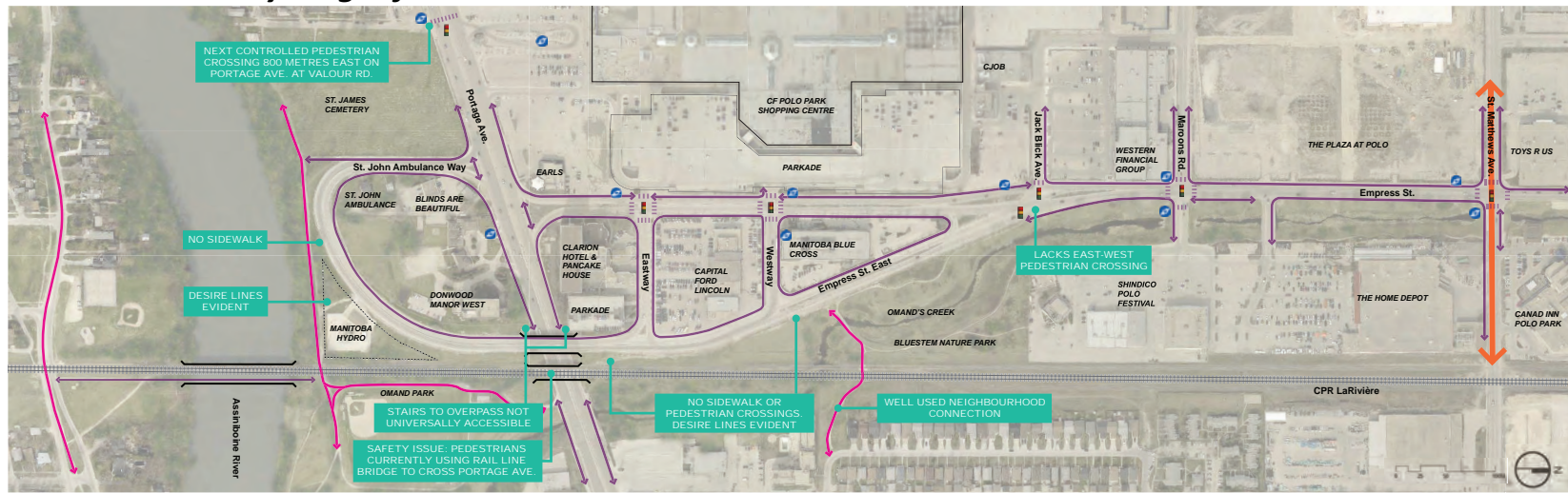
### Vehicle Routing and Parking



**LEGEND**

- Vehicular Circulation
- High Use Truck Movement
- On-Street Parking (Approx. 107 stalls)
- Signalized Intersection
- Transit Stops

### Pedestrian and Cycling Infrastructure



**LEGEND**

- Sidewalks
- Pathways
- Cycling Infrastructure (Sharrows/Buffered Bike Lanes)
- Pedestrian Crossing
- Signalized Intersection
- Transit Stops

The Preliminary Design Study team gathered input through stakeholder meetings, a public open house, and online survey to identify preferences, issues and review schematic routing options.

### Key considerations included:

#### Connections: Ease of Movement for Pedestrians and Cyclists

- Connection to surrounding neighbourhoods, existing pathway system, across the river, Polo Park, businesses and bike parking
- Suggestion for protected bike lanes, additional sidewalks and better crossings

#### Traffic Congestion: Current and Future

- Consideration for the impact of reducing vehicle lanes in the project area
- Prioritize for motorists' needs - current and future

#### Vehicle Routing and Ease of Movement

- Accommodate trucking needs: flow, yields, and turning requirements
- Desire for continuous flow and avoid multiple stops at traffic lights
- Consider access to businesses for staff, customers, and deliveries

#### On-Street Parking

- Concern regarding impacts to on-street parking along Empress Street East, Empress Street, Eastway and Westway

#### Ease of Access a Priority During Construction

- Concern for future construction and maintenance activities resulting in major traffic delays, confusion, difficulties with access to businesses and loss of business
- Concern for construction projects in Polo Park area running concurrently

#### Safety and Visibility

- Public safety a priority in all routing and crossings
- Crime prevention through environmental design (CPTED) should be considered for all pathways and greenspace areas
- Consider areas for conflicts between users groups (pedestrians, cyclists, cars, trucks and buses)

#### Inclusive for All Abilities

- Universally Accessible, barrier free, meets City of Winnipeg Accessibility Design Standards
- Considers the needs of pedestrians and cyclists and appropriate separation (physical, visual, tactile, use of materials)
- Consideration for ease of use (path slopes, intersection layouts, wayfinding, access, potential obstacles)

#### Protection of Trees and Native Plantings

- Increase greenspace adjacent to Omand's Creek and create seating areas
- Consider Omand's Creek and Assiniboine River riparian habitats when selecting stabilization methods and materials

#### Maintenance

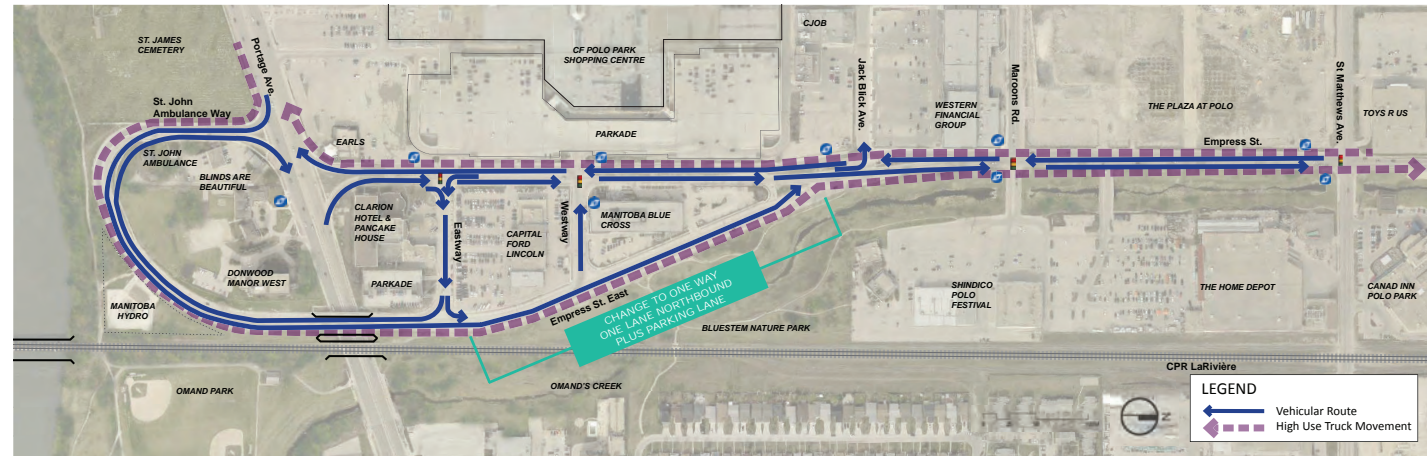
- Consider maintenance requirements for plant material in green space and boulevards
- Allow for snow clearing on pedestrian and bike paths

STAKEHOLDERS ENGAGED IN THE DESIGN STUDY: Area Councillors • City of Winnipeg Departments • Winnipeg Transit • Emergency Medical Services (EMS) • Manitoba Hydro • Canadian Pacific Railway • The Province of Manitoba  
Manitoba Trucking • Omand's Creek / Nature North • Western Financial Group • Shindico Polo Festival • Access Advisory Committee (AAC) • Active Transportation Advisory Committee (ATAC) • Bike Winnipeg • Cadillac Fairview Polo Park • Manitoba Blue Cross  
Capital Ford Lincoln • Winnipeg Trails Association • Clarion Hotel • Home Depot • St John Ambulance • Winnipeg Regional Health Authority • Donwood Manor West • CAA Manitoba • Canad Inn Polo Park • St. James Anglican Church and Cemetery

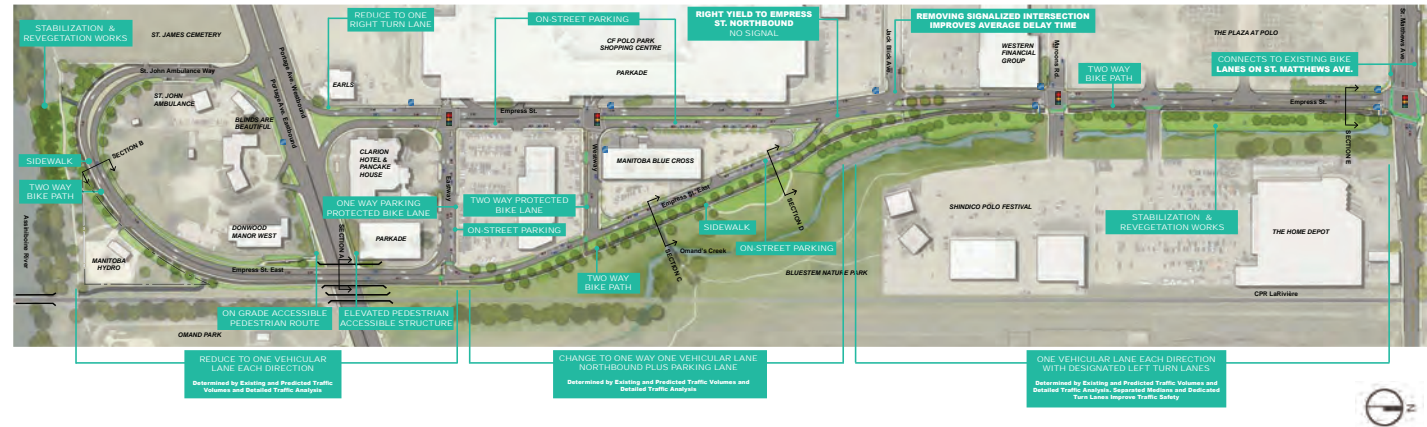
## New Vehicle Routing

### The final design:

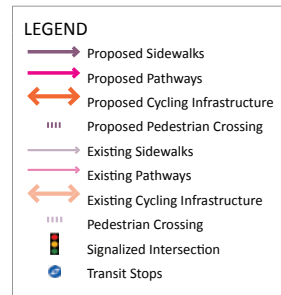
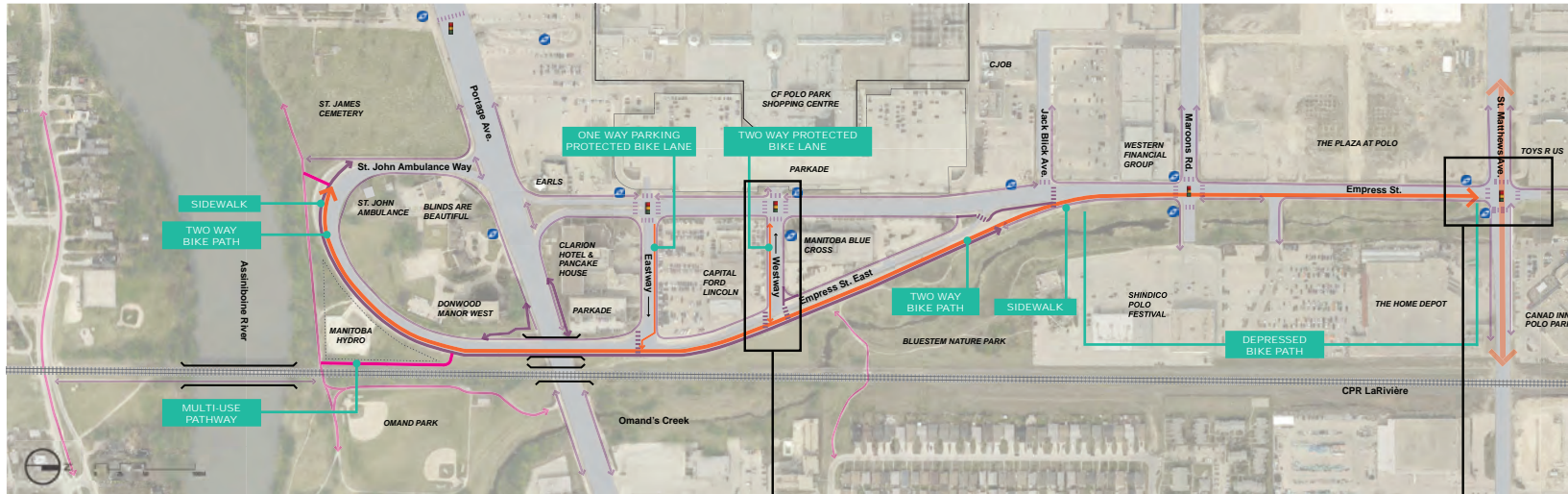
- Reduces pedestrian/vehicle conflict with improved crossings
- Minimizes impact to truck movements
- Maintains access to private properties
- Allows for on-street parking
- Does not impact existing transit operations
- Enhances streetscape character and aesthetics
- Expands greenspace adjacent to Omand's Creek
- Creates new pedestrian and cycling facilities and increases accessibility



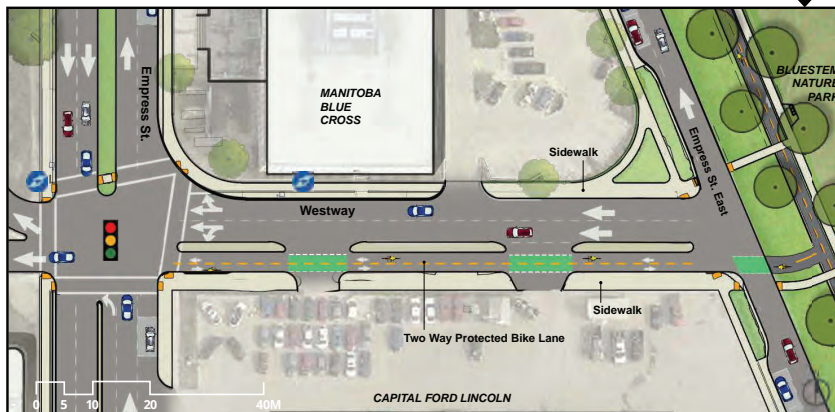
## Final Design Plan



## New Pedestrian and Cycling Routing



## Final Plan Details



Two Way Bike Path on Westway



Empress Street at St. Matthews Avenue Intersection  
Refer to Section D



Two Way Bike Path



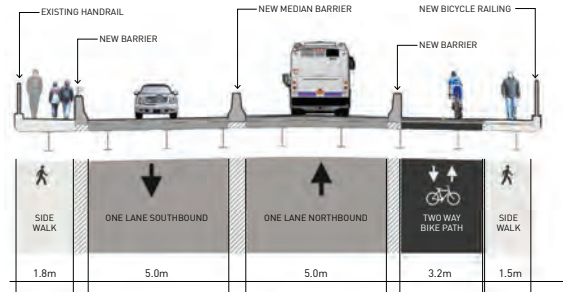
Depressed Two Way Bike Path

# EMPRESS STREET OVERPASS

## Bridge Rehabilitation

The rehabilitation of the Empress Street Overpass over Portage Avenue will extend the service life of the bridge for an additional 25 to 40 years through:

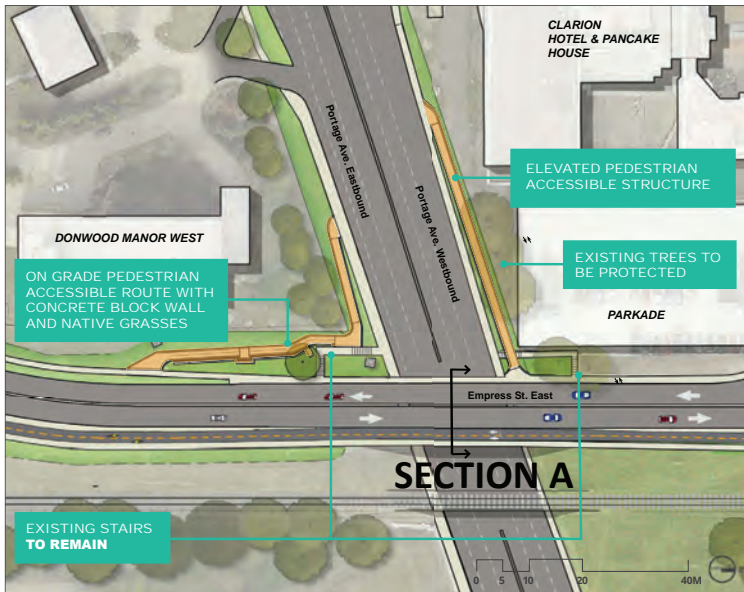
- Rehabilitation of the abutment and pier concrete
- Rehabilitation of the deck surface, including providing a new wearing surface
- Reorganization of the bridge cross-section, as shown to the right, to provide a widened sidewalk and two-way bike lane.



Section A - Empress Street East Overpass

## Project Additions

Accessibility improvements were added based on City Council's directive in concurrence with the Access Advisory Committee.



Pedestrian Access to Empress Street Overpass

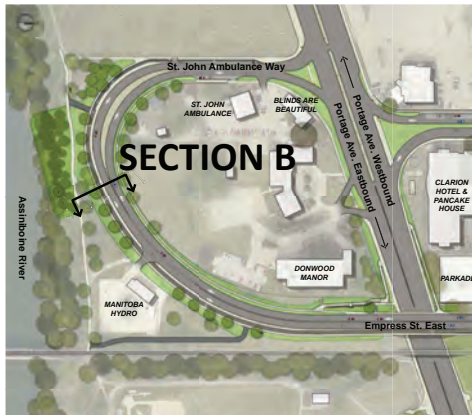


Elevated Pedestrian Accessible Structure - north of Portage Avenue

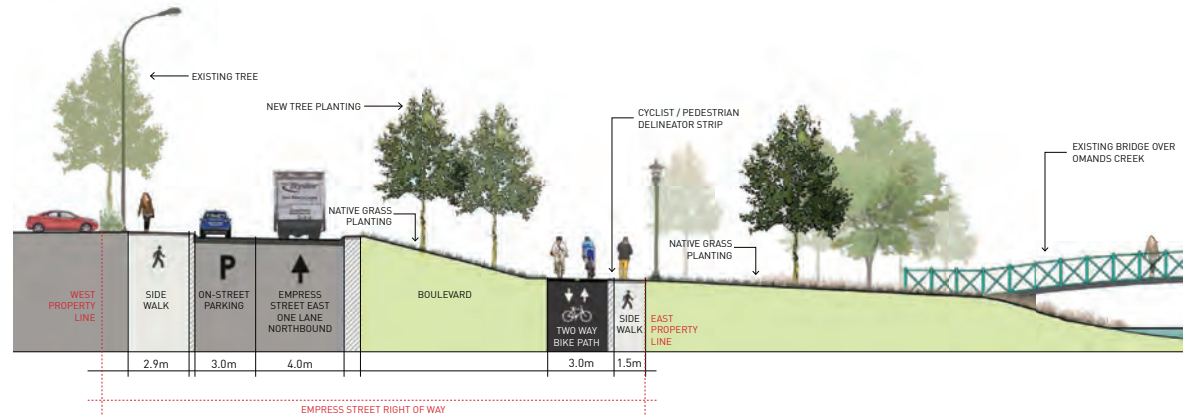


Accessible Pedestrian Route - south of Portage Avenue

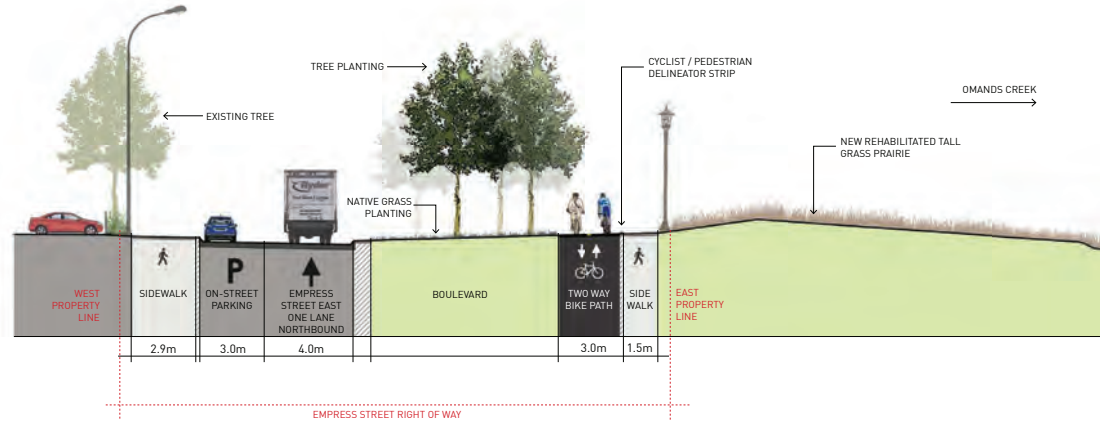
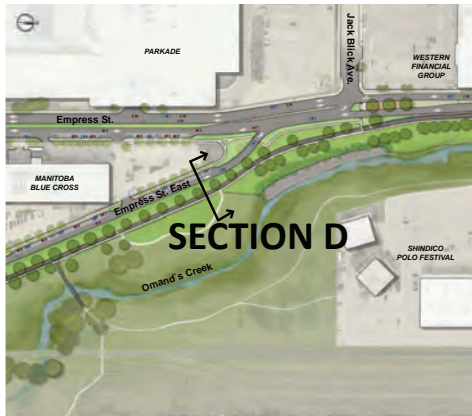




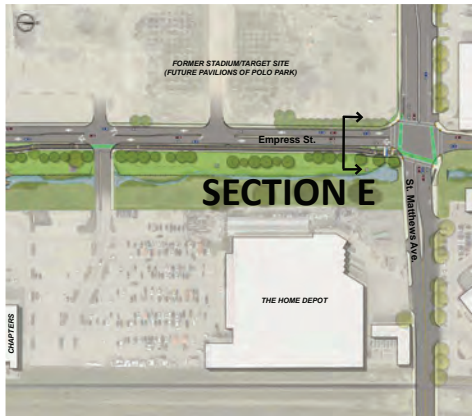
**Section B - At St. John Ambulance Way**  
\*Final lighting design to be determined



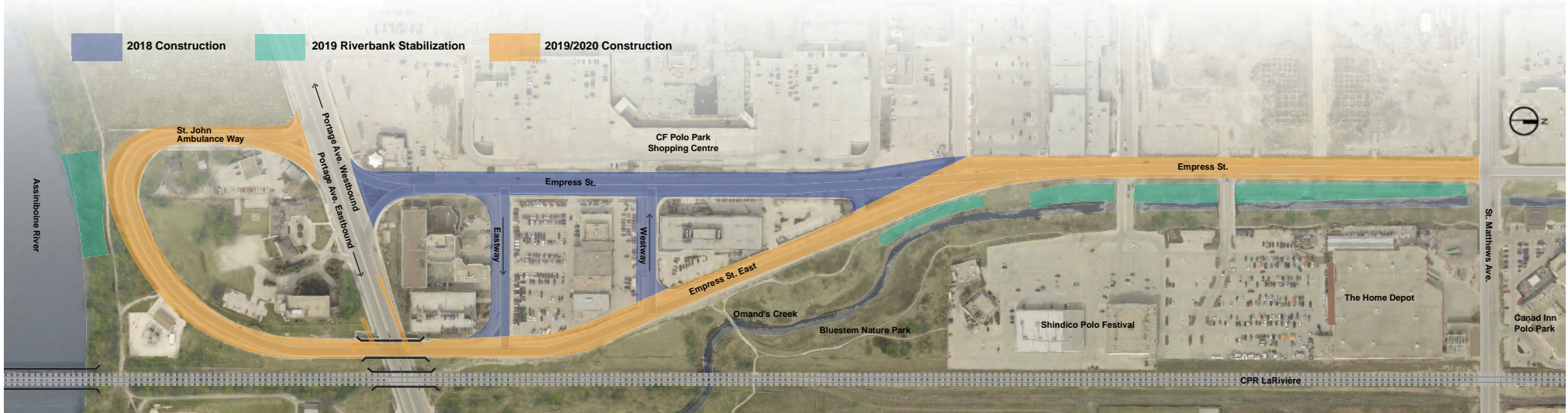
**Section C - At Bluestem Nature Park and Omand's Creek crossing**  
\*Final lighting design to be determined



**Section D - At Bluestem Nature Park**  
\*Final lighting design to be determined



**Section E - Empress St. south of St. Matthews Ave.**  
\*Final lighting design to be determined



Look for updates on the City of Winnipeg project webpage:  
[winnipeg.ca/empress](http://winnipeg.ca/empress)

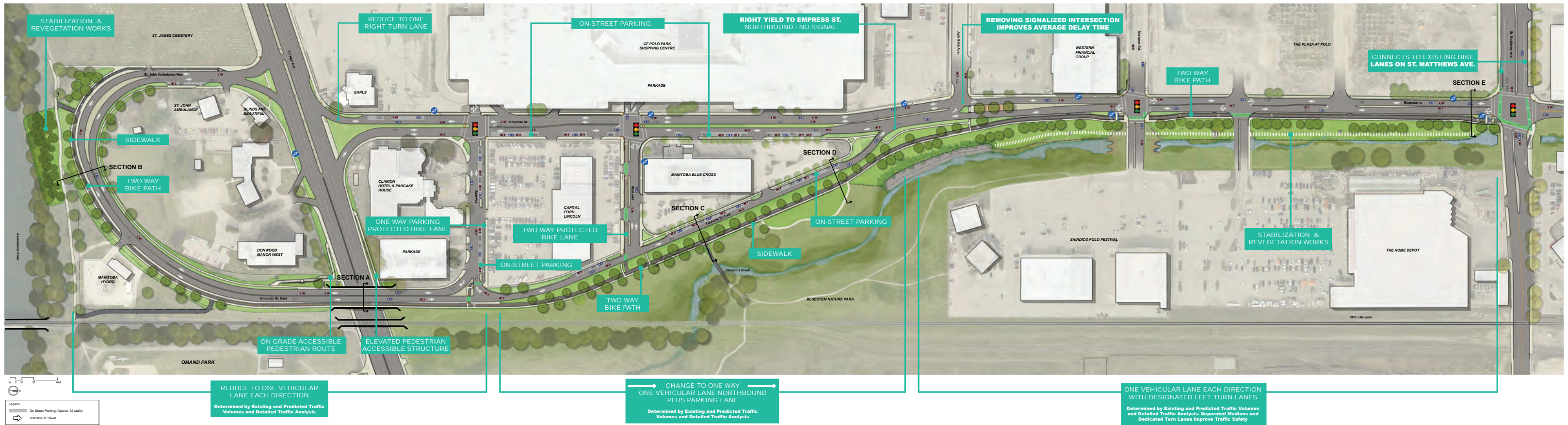
For more information contact



## Thank you for coming today !

The presentation boards are available on the City of Winnipeg project webpage.

Please fill out a comment form to provide feedback on this event.



**Appendix D – Public Open House Comment Form and  
Online Survey Data and Results**

Empress Street and Overpass Reconstruction and Rehabilitation

**Public Open House - October 10th, 2018**

Comment Form Responses – 16 forms received

1. How did you hear about this Public Open House Event? (check all that apply)

Winnipeg Free Press Ad	The Wolseley Leaf Ad	Community Newspaper Ad (The Metro)	City of Winnipeg website	Email Invitation	Poster or Mail drop	City of Winnipeg News Release	Facebook or Twitter	Other:
1	1	3	1	4	1	2	2	5

Responses for 'Other': Word of mouth, walking through the mall

2. What is your interest in this project? (check all that apply)

I live nearby	I travel through the area	I work in the area	I visit the area	Business Owner in area	Interest in ped and cycling improvements	Interest in road improvements	Interest in work surrounding waterways	Other
11	12	0	7	1	11	6	6	2

Responses for 'Other': Shop here, grew up here

3. I had the opportunity to talk to and/or ask questions of the City of Winnipeg and consultant staff

Strongly Agree	Agree	Neutral	Disagree	Strongly Disagree
15 (94%)	1 (6%)	0	0	0

4. I understand the reasons for this project

Strongly Agree	Agree	Neutral	Disagree	Strongly Disagree
12 (80%)	3 (20%)	0	0	0

5. Please provide any comments you may have regarding today's Public Open House event

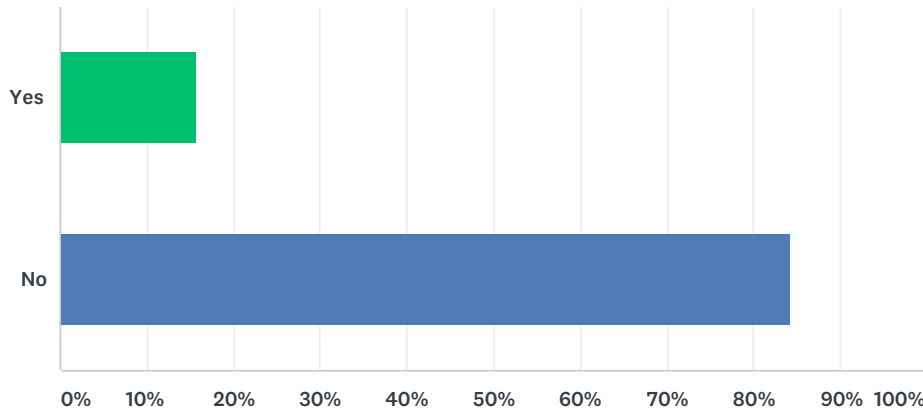
- Very informative
- We need better signage before Polo from the West, not after Polo! That's why they use our street - Strathcona street
- Glad to see active transportation included in road reconstruction
- The bike lane addition will be a huge help for me to come shopping from the River Heights area. I look forward to the lane being ready. BTW Two signs have been posted on the bike/ped bridge crossing the Assiniboine telling cyclists to dismount. That is totally unreasonable and not in keeping with promoting cycling as a mode of transport - give pedestrians priority and ride with care yes, but dismount-no!

- I am very disappointed to learn that nothing is going to be done to address the chronic problem of spring flooding under the Empress bridge making Portage Avenue impassible for pedestrians. It is worse on the north side but exists on both sides. I have called 311, sent photos to my city councillor but nothing is improved systematically. I cannot walk from my home to my work place for long periods each year. The design of the drainage needs to be addressed but as a short gap response snow removal on the sidewalk and hill sides need to be done regularly. Please address this issue. If Portage was impassible for cars something would have been done.
  - Doesn't appear to affect the cemetery
  - We like the design, especially bike improvements- can't wait!
  - Glad Empress is being repaired as it has been in very poor shape for a long time
  - Pleased to see there will finally be safe passage over Portage Avenue at Omand's Creek for cyclists and pedestrians
  - Looks good! You did a good job rehabilitating St. James Street
  - Positive development, glad it is happening - we need even more active transportation and pedestrian friendly infrastructure - keep it coming!
  - Very informative
  - It has been helpful for people to explain the improvements as just looking at diagrams isn't enough for me - thank you!
6. Are you interested in receiving further updates about the Empress Overpass project from the City of Winnipeg?

Contact Info saved in separate Excel spreadsheet and forwarded to City.

# Q1 Do you plan on attending or did you attend the October 10, 2018 Open House Event in Polo Park Shopping Centre?

Answered: 19 Skipped: 0

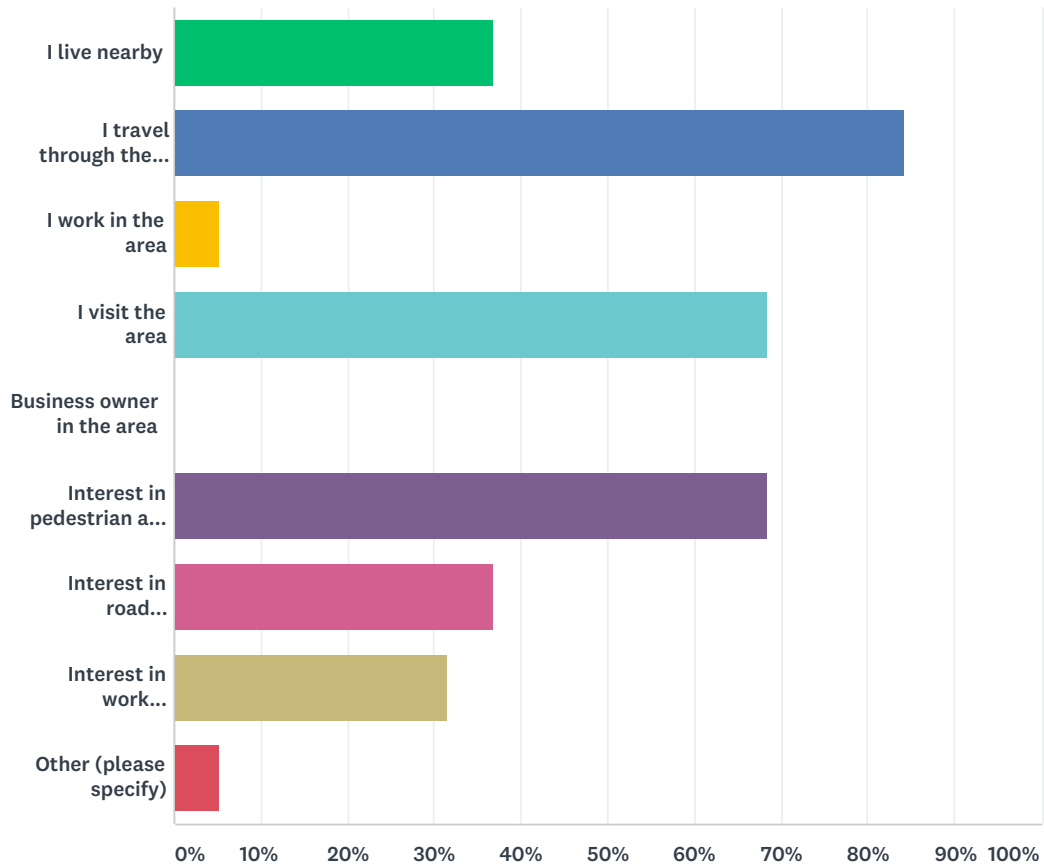


ANSWER CHOICES	RESPONSES	
Yes	15.79%	3
No	84.21%	16
TOTAL		19



## Q2 What is your interest in this project? (check all that apply)

Answered: 19 Skipped: 0

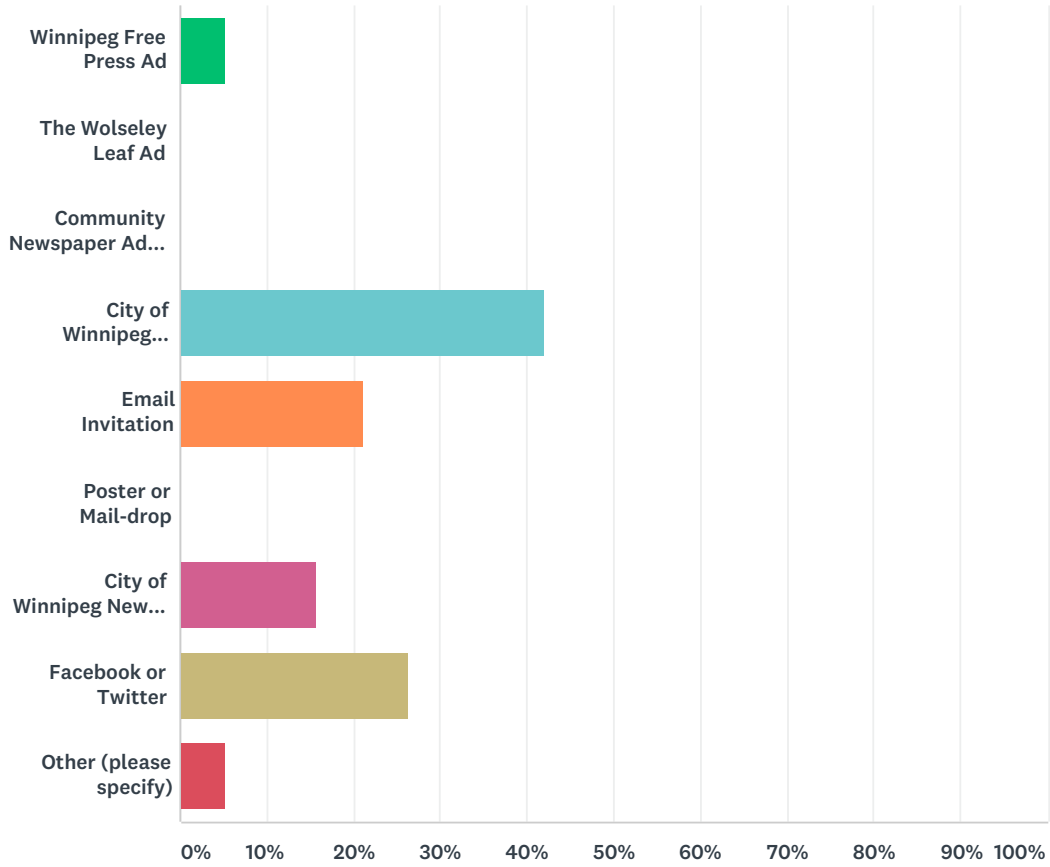


ANSWER CHOICES	RESPONSES
I live nearby	36.84% 7
I travel through the area	84.21% 16
I work in the area	5.26% 1
I visit the area	68.42% 13
Business owner in the area	0.00% 0
Interest in pedestrian and cycling improvements	68.42% 13
Interest in road improvements	36.84% 7
Interest in work surrounding waterways	31.58% 6
Other (please specify)	5.26% 1
Total Respondents: 19	

#	OTHER (PLEASE SPECIFY)	DATE
1	Eliminating parking along Empress Street East is great, great job by the planners.	10/11/2018 11:32 AM

### Q3 How did you hear about this project?

Answered: 19 Skipped: 0

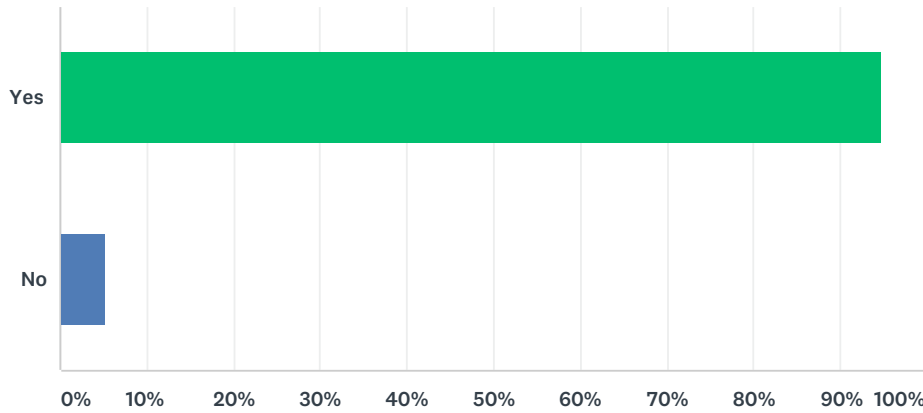


ANSWER CHOICES	RESPONSES	
Winnipeg Free Press Ad	5.26%	1
The Wolseley Leaf Ad	0.00%	0
Community Newspaper Ad (The Metro)	0.00%	0
City of Winnipeg Website	42.11%	8
Email Invitation	21.05%	4
Poster or Mail-drop	0.00%	0
City of Winnipeg News Release	15.79%	3
Facebook or Twitter	26.32%	5
Other (please specify)	5.26%	1
Total Respondents: 19		

#	OTHER (PLEASE SPECIFY)	DATE
1	Public Engagement News	9/27/2018 5:47 PM

### Q4 Were you able to find the information you need (at the event or online at winnipeg.ca/Empress)?

Answered: 19 Skipped: 0

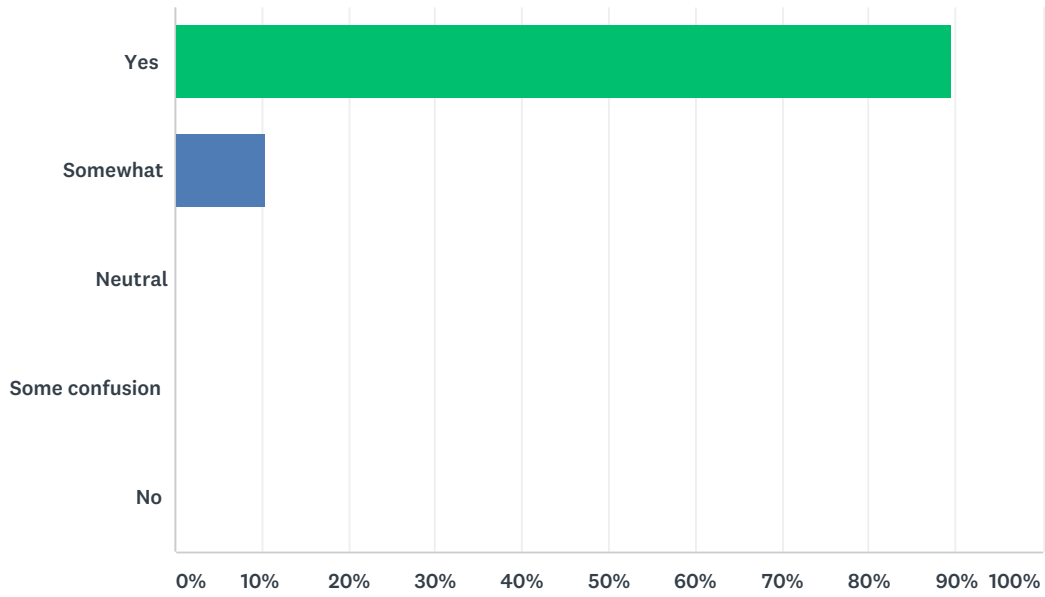


ANSWER CHOICES	RESPONSES	
Yes	94.74%	18
No	5.26%	1
TOTAL		19

#	IF NO, WHAT INFORMATION WAS MISSING?	DATE
1	Happy to see bike paths physically separated from car traffic.	10/2/2018 3:32 PM

### Q5 Do you understand the purpose of this project?

Answered: 19 Skipped: 0



ANSWER CHOICES	RESPONSES	
Yes	89.47%	17
Somewhat	10.53%	2
Neutral	0.00%	0
Some confusion	0.00%	0
No	0.00%	0
<b>TOTAL</b>		<b>19</b>

## Q6 Do you have any other questions or concerns that were not addressed by the online content?

Answered: 4 Skipped: 15

#	RESPONSES	DATE
1	It looks very good. Thanks.	10/21/2018 9:33 AM
2	too much accomodation for bikes	10/12/2018 6:59 PM
3	Want to see protected bike paths throughout the city, that are connected with one another. The more we can separate bikes and pedestrians from cars, the safer everyone will be.	10/2/2018 3:32 PM
4	mo	9/28/2018 4:10 PM