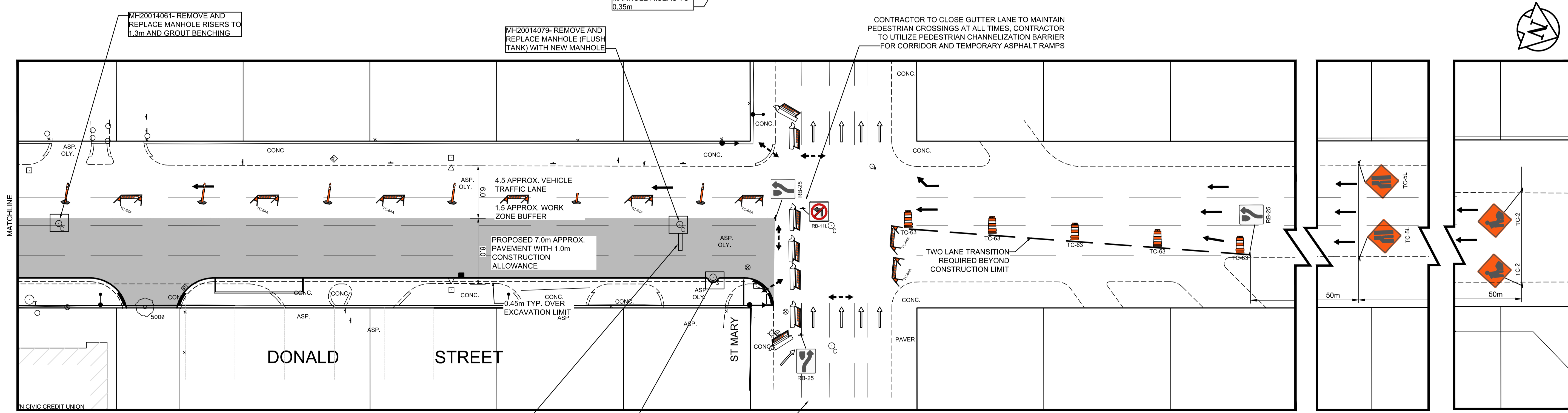
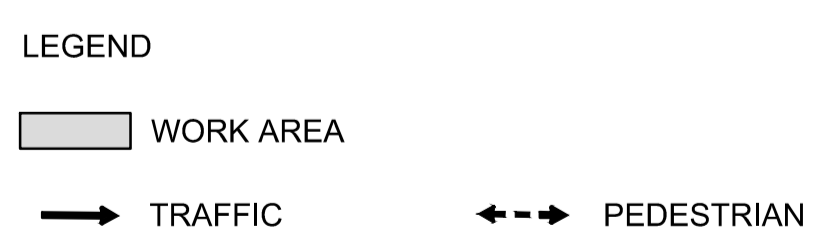
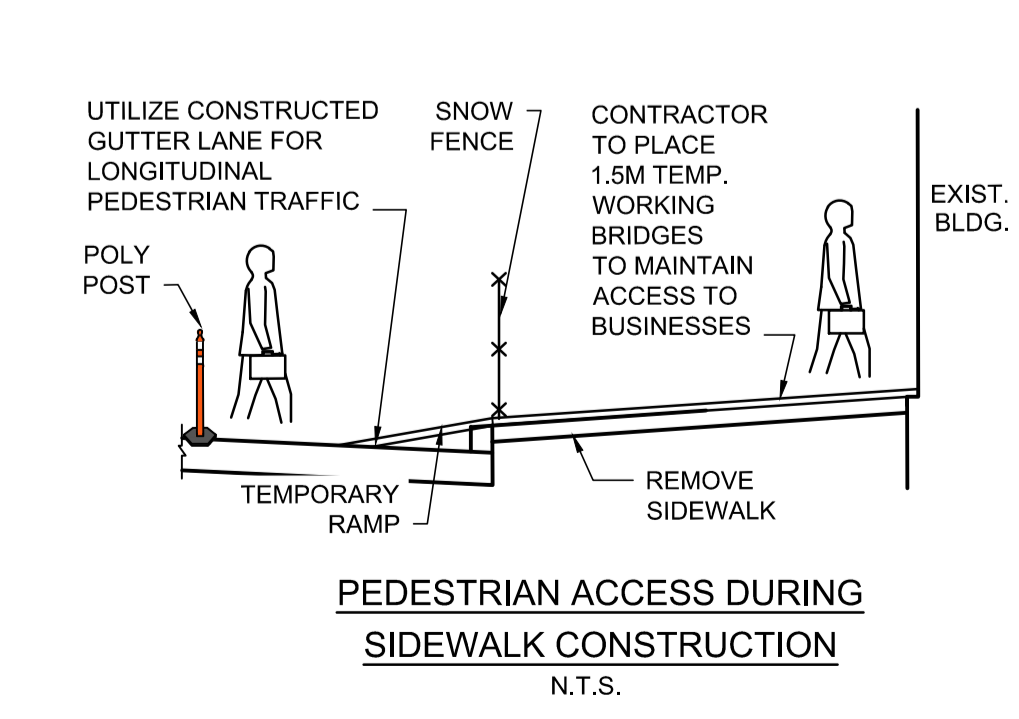


PLAN - STAGE 1
Scale 1:250



PLAN - STAGE 1
Scale 1:250



- NOTES:**
- ALL TEMPORARY SIGNAGE AND TRAFFIC CONTROL TO BE IN ACCORDANCE WITH THE LATEST EDITION OF THE MANUAL OF TEMPORARY TRAFFIC CONTROL ON CITY STREETS.
 - CONTRACTOR TO MAINTAIN VEHICLE ACCESS TO ALL SIDE STREETS, PRIVATE APPROACHES AT ALL TIMES. ANY DISRUPTION TO BE APPROVED BY THE CONTRACT ADMINISTRATOR AND CONTRACTOR TO ADVISE OWNER.
 - PROPERLY EQUIPPED FLAG PERSONS WILL BE REQUIRED WHEN MOVING ANY CONSTRUCTION VEHICLES INTO OR OUT OF TRAFFIC.
 - CONTRACTOR TO HAVE FLAG PERSONS AT ALL SIDESTREET INTERSECTIONS DURING ASPHALT PAVING.
 - CONTRACTOR TO INSTALL AND MAINTAIN ALL TRAFFIC CONTROL SIGNAGE, REGULATORY SIGNAGE TO BE INSTALLED BY CITY OF WINNIPEG TRAFFIC SERVICES.
- TRAFFIC NOTES:**
- CONSTRUCTION ALLOWANCE TO BE MAINTAINED WITH 1.5m TEMPORARY BUFFER LANE AND 4.5m VEHICLE TRAFFIC LANE.
 - CONTRACTOR TO MAINTAIN PEDESTRIAN ACCESS TO BUSINESSES AT ALL TIMES.
 - CONTRACTOR TO RELOCATE EXISTING BICYCLE LANE DETOUR SIGNS AS REQUIRED.

**ENGINEERS
GEOSCIENTISTS
MANITOBA**
Certificate of Authorization
AECOM Canada Ltd.
No. 4671 Date:

METRIC
WHOLE NUMBERS INDICATE MILLIMETRES
DECIMALIZED NUMBERS INDICATE METRES

AECOM		DESIGNED BY: TLF	CHECKED BY: TLF
		DRAWN BY: PAAP	APPROVED BY: TLF
HOR. SCALE: 1:250		RELEASED FOR CONSTRUCTION BY:	
VERTICAL:			
0 ISSUED FOR TENDER	2020/11/30	TLF	
A ISSUED FOR REVIEW	2020/10/23	TLF	
NO. REVISIONS	DATE	BY	DATE
			2019/08/27

ENGINEER'S SEAL
PROVINCE OF MANITOBA
T.L. FINDLAY
Member 23820
REGISTERED PROFESSIONAL ENGINEER

THE CITY OF WINNIPEG
PUBLIC WORKS DEPARTMENT
ENGINEERING DIVISION

2021 DOWNTOWN STREET
PAVEMENT RENEWALS

CITY DRAWING NUMBER
P-3535-07
SHEET 07 OF 30

CONSTRUCTION STAGING - DONALD STREET
RECONSTRUCTION BROADWAY TO ST MARY AVENUE
STAGE 1