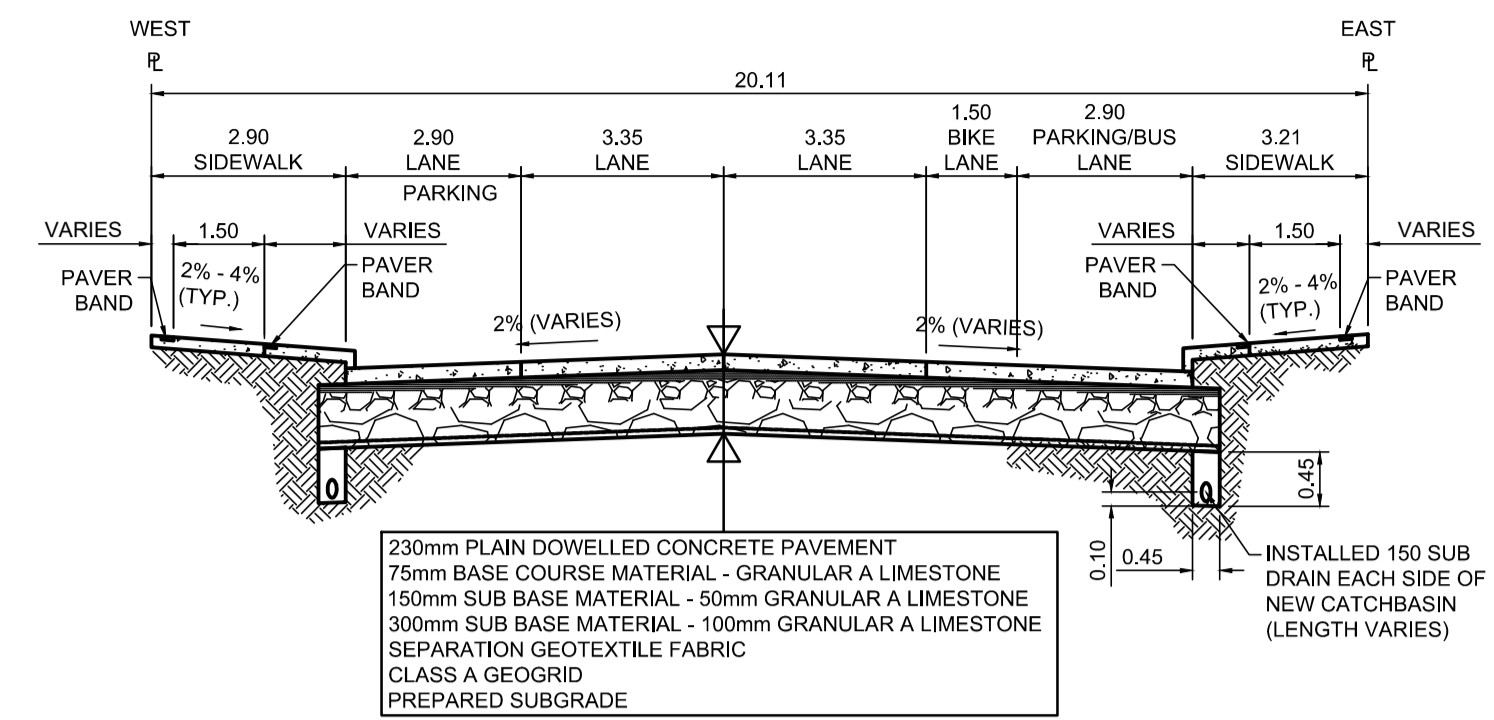


**PROFILE**  
Scale H=1:250 V=1:10

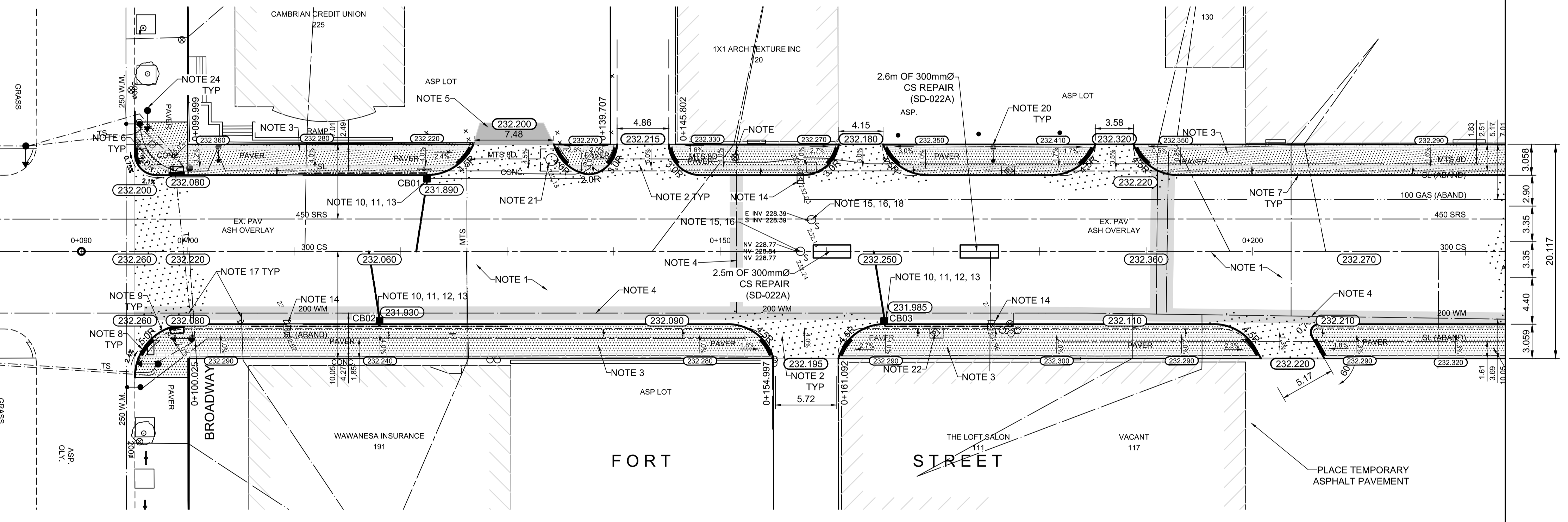


**TYPICAL SECTION**  
Scale NTS

ITEM	RIM ELEV.	Sta	INVERT					CONNECTION	LEAD	FLOW RESTRICTOR	
			EAST	WEST	NORTH	SOUTH	SEWER				
CB01	231.890	0+123		230.290				228.60±	300 CLAY CS	7.0m-250Ø @ 2% Min	200mm
CB02	231.930	0+118	230.330					228.58±	300 CLAY CS	7.0m-250Ø @ 2% Min	200mm
CB03	231.895	0+165		230.295				228.80±	300 CLAY CS	7.0m-250Ø @ 2% Min	200mm

- REFERENCE NOTES**
- PAVEMENT DIMENSIONS ARE TO BACK OF CURB
  - BASELINE IS CENTRELINE OF RIGHT-OF-WAY
  - PROPERTY LINES OBTAINED FROM THE CITY OF WINNIPEG L.B.I.S., AND SCALE FACTOR WAS NOT APPLIED
  - REFER TO AECOM FIELD BOOK NO. 4998
  - CATCH BASIN CONNECTIONS TO SEWER DESIGNED TO MAINTAIN PRE-CONSTRUCTION CAPACITY BY CATCH BASIN LEAD RESTRICTION AS INDICATED ON THE DRAWINGS. ADDITIONAL OR MODIFIED CONNECTIONS TO THE SEWER SYSTEM BEYOND THOSE INDICATED ON THE DRAWINGS REQUIRE REVIEW AND WRITTEN APPROVAL BY THE CONTRACT ADMINISTRATOR.

- CONSTRUCTION NOTES**
- REMOVE EXISTING PAVEMENT AND CONSTRUCT NEW 230mm PLAIN DOWELLED CONCRETE PAVEMENT
  - CONSTRUCT NEW 200mm REINFORCED CONCRETE PAVEMENT
  - REMOVE EXISTING CONCRETE SIDEWALK AND CONSTRUCT NEW 100mm SIDEWALK WITH BLOCKOUTS c/w PAVING STONES FOR INDICATOR SURFACE (REFER TO TYPICAL SECTION ON THIS SHEET AND CT-19 DETAILS FOR ADDITIONAL INFORMATION). CONTRACTOR TO SAW CUT AT PROPERTY LINE FULL LENGTH OF PROJECT
  - INSULATE WATER MAIN AND WATER SERVICES UNDER ROADWAY EXCAVATION AS PER (SD-18)
  - PLACE ASPHALT PAVEMENT (TYPE 1A)
  - INSTALL NEW DETECTABLE SURFACE WARNING TILES
  - CONSTRUCT NEW BARRIER CURB (180mm HT. SEPARATE)
  - CONSTRUCT NEW MONOLITHIC CURB RAMP (10mm HT. INTEGRAL)
  - CONSTRUCT NEW MODIFIED BARRIER CURB (180mm HT. INTEGRAL) AS PER SD-203B AT ALL STREET/LANE INTERSECTION RADI
  - INSTALL NEW CURB AND GUTTER INLET c/w CATCHBASIN (SD024) CONNECT NEW 250mm LEAD TO EXISTING COMBINED SEWER
  - INSTALL FLOW RESTRICTOR PIPE AS INDICATED IN CB & CP TABLE (SD-122)
  - INSULATE WATERMAIN AND/OR WATER SERVICE UNDER CATCHPIT OR CATCHBASIN
  - INSTALL 150mm SUBDRAIN 12m ON EACH SIDE OF CATCHBASIN UNLESS OTHERWISE NOTED
  - REMOVE EXISTING CURB INLET / CATCH PIT / CATCHBASIN AND ABANDON EXISTING LEAD
  - REMOVE EXISTING FRAME AND COVER AND INSTALL NEW FRAME AND SOLID COVER (AP-006 & AP-007)
  - ADJUST EXISTING CATCHBASIN / MANHOLE FRAME AND COVER
  - ADJUST EXISTING WATERMAIN VALVE BOX TO GRADE
  - INSTALL NEW 50mm CAST IRON RISER RING
  - ADJUST EXISTING CURB STOP TO GRADE
  - EXISTING STREET LIGHT POLE TO BE RELOCATED (REFER TO STREET LIGHTING DRAWINGS FOR ADDITIONAL DETAILS)
  - ADJUST MANITOBA HYDRO/ MTS MANHOLES (BY OTHERS)
  - REMOVE EXISTING PARKING PAY STATIONS (BY OTHERS)
  - INSTALL BIKE RACK
  - EXISTING TRAFFIC SIGNALS POLE TO BE RELOCATED (REFER TO SIGNALS DRAWINGS FOR ADDITIONAL DETAILS)



**PLAN**  
Scale 1:250

**ENGINEERS GEOSCIENTISTS MANITOBA**  
Certificate of Authorization  
AECOM Canada Ltd.  
No. 4671 Date: \_\_\_\_\_

**METRIC**  
WHOLE NUMBERS INDICATE MILLIMETRES  
DECIMALIZED NUMBERS INDICATE METRES

EXISTING	LEGEND - PLAN	PROPOSED	EXISTING	LEGEND - PLAN	PROPOSED	EXISTING	LEGEND - PROFILE	PROPOSED
150 mm W.M.	WATERMAIN	150 mm W.M.	HYDRO	HYDRO	HYDRO	— x —	PROFILE	PROFILE
⊕	HYDRANT	⊕	M.T.S.	M.T.S.	M.T.S.	— □ —	WEST GUTTER	WEST GUTTER
⊙	VALVE	⊙	CONCRETE	CONCRETE	CONCRETE	— ○ —	EAST GUTTER	EAST GUTTER
300mm L.D.S.	LAND DRAINAGE SEWER	300mm L.D.S.	ASPHALT	ASPHALT	ASPHALT	— ◇ —	N/W PROPERTY LINE	N/W PROPERTY LINE
250mm W.W.S.	WASTEWATER SEWER	250mm W.W.S.	PROPERTY LINE	PROPERTY LINE	PROPERTY LINE	— ○ —	S/E PROPERTY LINE	S/E PROPERTY LINE
○	MANHOLE	○	SURVEY BAR	SURVEY BAR	SURVEY BAR	— — —		
□	CATCH BASIN	□	ELEVATION	ELEVATION	ELEVATION	(35.750)		
▽	CATCH PIT	▽	TREE	TREE	TREE	— — —		
↑	TRAFFIC SIGNAL POLE	↑	SIDEWALK RAMP	SIDEWALK RAMP	SIDEWALK RAMP	— — —		
↑	STREET LIGHT	↑	CONCRETE SIDEWALK	CONCRETE SIDEWALK	CONCRETE SIDEWALK	— — —		
—	GAS	—	FENCE	FENCE	FENCE	— — —		

**LOCATION APPROVED UNDERGROUND STRUCTURES**

SUPV. U/G STRUCTURES COMMITTEE DATE \_\_\_\_\_

**NOTE:**  
LOCATION OF UNDERGROUND STRUCTURES AS SHOWN ARE BASED ON THE BEST INFORMATION AVAILABLE, BUT NO GUARANTEE IS GIVEN THAT ALL EXISTING UTILITIES ARE SHOWN OR THAT THE GIVEN LOCATIONS ARE EXACT. CONFIRMATION OF EXISTENCE AND EXACT LOCATION OF ALL SERVICES MUST BE OBTAINED FROM THE INDIVIDUAL UTILITIES BEFORE PROCEEDING WITH CONSTRUCTION.

B.M.	tbm	South East Corner of Smith Avenue & Broadway, property line, top of 1" x 1" iron bar
ELEV.	231.968	

**AECOM**

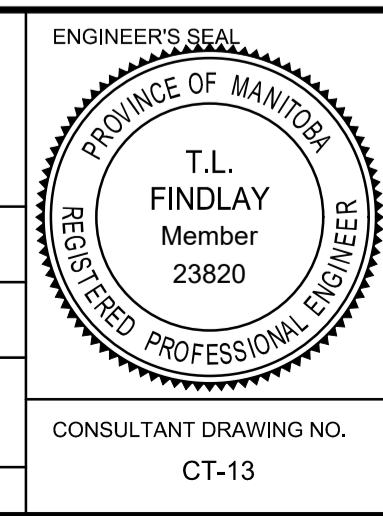
DESIGNED BY: BC  
CHECKED BY: TLF

DRAWN BY: PAAP  
APPROVED BY: TLF

HOR. SCALE: AS SHOWN  
VERTICAL: RELEASED FOR CONSTRUCTION BY: \_\_\_\_\_

0 ISSUED FOR TENDER 2020/01/24 TLF  
A ISSUED FOR REVIEW 2020/02/10 KWR

NO. REVISIONS DATE BY DATE 2019/08/27



**THE CITY OF WINNIPEG**  
PUBLIC WORKS DEPARTMENT  
ENGINEERING DIVISION

DOWNTOWN PAVEMENT RENEWAL PROJECT  
2020 CONSTRUCTION

PLAN/PROFILE GRADING PLAN  
FORT STREET  
BROADWAY TO STA. 0+225

CITY DRAWING NUMBER P-3527-13  
SHEET 13 OF 19

CONSULTANT DRAWING NO. CT-13