

Summary of Public Engagement for the North East Exchange District Engineering Study Detailed Design for Lily Street, John Hirsch Place and Pacific Avenue

Prepared for:
City of Winnipeg

Prepared by:



March 2016

Table of Contents

1.0	INTRODUCTION	1
2.0	STAKEHOLDER MEETINGS	2
3.0	OPEN HOUSE	4
4.0	KEY THEMES	11

1.0 Introduction

MMM Group Limited (MMM) and HTFC Planning and Design (HTFC) were retained by the City of Winnipeg and CentreVenture Development Corporation to prepare concept and detailed designs for Lily Street and parts of John Hirsch Place for tentative construction in 2016, and parts of Pacific Avenue for tentative construction in advance of the 2017 Canada Games. These projects are tailored to support the ongoing development and private investments in the area. The purpose of these collaborative efforts is to provide public rights-of-way that support this evolving and vibrant area.

The public engagement process played an important role in informing the public and key stakeholders about the project. MMM hosted stakeholder meetings and a public open house to introduce the project to the public, obtain a better understanding of stakeholder and public needs or concerns with the project, and get feedback on the proposed concepts. The following report provides a summary of the public engagement process undertaken and the feedback generated.

Three public engagement events were conducted: a stakeholder meeting for Lily Street and Pacific Avenue, a stakeholder meeting for John Hirsch Place and a public open house. In addition, meetings were held with impacted property owners, as needed, to discuss specific technical concerns and details.

2.0 Stakeholder Meetings

These meeting provided an opportunity for key stakeholders (property owners, tenants and residents) to review the proposed designs and provide their feedback. The intent of the meeting was to find synergies and complementary ideas to help achieve the best possible design, verify new development interest or changes to anticipated development plans, and verify loading requirements and private access.

The stakeholder meeting for Lily Street and Pacific Avenue was held on Thursday, November 26, 2015 from 2:00 PM to 4:00 PM, and the stakeholder meeting for John Hirsch Place was held on November 26, 2015 from 6:00 PM to 8:00 PM. Both meetings were held in the Sport for Life Centre Conference Room (145 Pacific Avenue).

Invitations to attend the stakeholder meetings were sent via mail and email to 18 property owners, businesses and residents who directly front onto Lily Street and Pacific Avenue, and 44 property owners, businesses and residents who directly back onto John Hirsch Place. Two invitations were returned to MMM because of an incomplete address or unknown recipient. A list of invited stakeholders can be found in **Appendix A**.

Both meetings began with a presentation on the background and intent of the study, work completed to-date, and an overview of the proposed designs. This was followed by a facilitated group discussion, where specific design details were discussed around draft concept plan maps.

10 stakeholders attended the Lily Street and Pacific Avenue meeting, and 10 stakeholders attended the John Hirsch Place meeting.

The following is a summary of the comments from the stakeholder meetings (detailed reports from both meetings can be found in **Appendix B**):

- Would like to see similar renewal work continue on Pacific from Lily to Waterfront, on John Hirsch to the west of Rorie, and on James Avenue.
- There is a need for more parking in the area, especially with increased residential population and events.
- There are concerns about double parking and loading on Pacific Avenue and John Hirsch Place.
- It is currently challenging to exit the John Hirsch Place parkade if vehicles are loading in “no stopping” areas.
- There is a desire for community garden space on John Hirsch Place.

- Consistent snow removal is needed to maximize the usability of the proposed designs.
- Improved pedestrian lighting is needed throughout the study area.
- Streetscaping and enhancements, such as benches, lighting and interpretive panels need to be maintained better.
- Bike racks are needed throughout the area.
- More garbage and recycling facilities are needed throughout the area.
- Private parking lots are in need of repair and improved lighting.
- Improved wayfinding signage would help direct pedestrians and vehicles to local amenities and attractions.
- There are concerns about traffic and pedestrian safety at peak event times.
- There is interest in the possibility of creating temporary or seasonal pedestrian-only streets.
- Accessible loading is needed on Lily Street near the Concert Hall and near the Children's House daycare on Pacific Avenue.
- Large vehicle loading needs to be accommodated on Lily Street (Concert Hall) and John Hirsch Place (Manitoba Theatre Centre and Cavalier Candies).

3.0 Open House

The open house provided the general public with an opportunity to view presentation boards outlining the project background and the proposed concept designs, speak with project team members, and provide input on the proposed designs. The open house was held on Thursday, January 28, 2016 at the Pantages Playhouse Theatre (180 Market Avenue) from 4:00 PM to 7:00 PM. The open house was advertised in the Winnipeg Free Press and Metro (**Appendix C**), on the City of Winnipeg website and social media outlets, and via Residents of the Exchange District and Exchange District Biz. In addition, a newsletter advertising the open house (**Appendix C**) was emailed to stakeholders and past attendees of the North East Exchange District Engineering Study public engagement events.

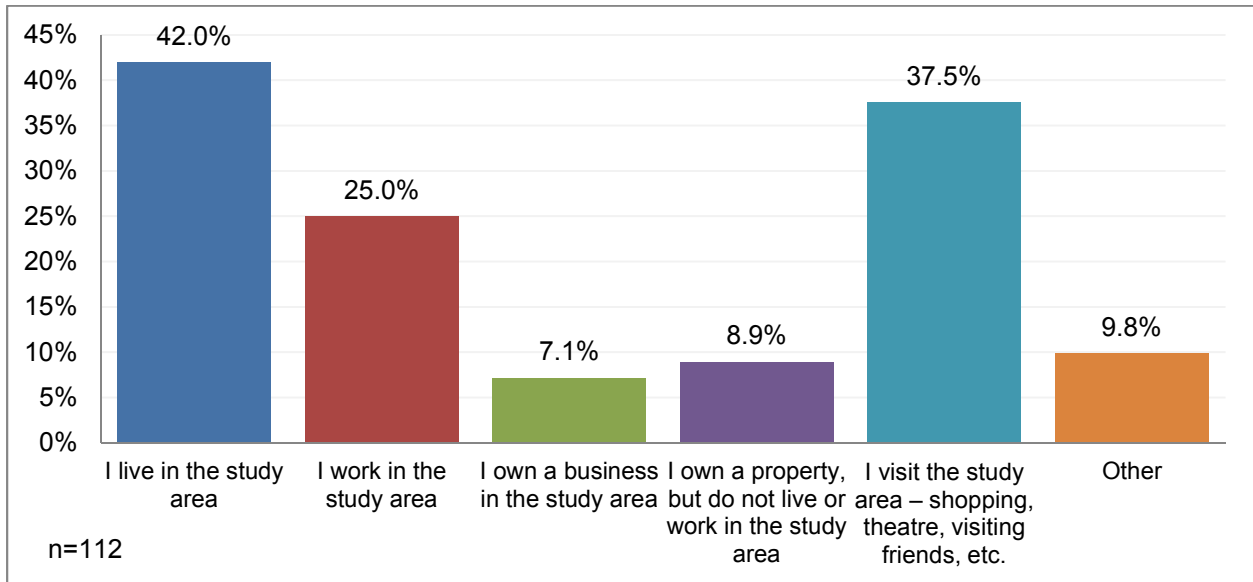
The presentation storyboards (**Appendix D**) displayed text and graphics on the study background and study area, study timeline, work completed to-date, and the proposed designs. Approximately 100 people attended the event.

Comment Sheet

A comment sheet (**Appendix E**) was provided at the open house to collect written feedback. In addition, the presentation storyboards and comment sheet were posted online two weeks before the open house. This provided those who couldn't attend the events with the opportunity to review the materials and provide their input online. The link to the online materials was handed out at the open house and advertised through the City of Winnipeg's social media outlets. A total of 113 comment sheets were received (69 paper comment sheets from the open house and 44 online comment sheets).

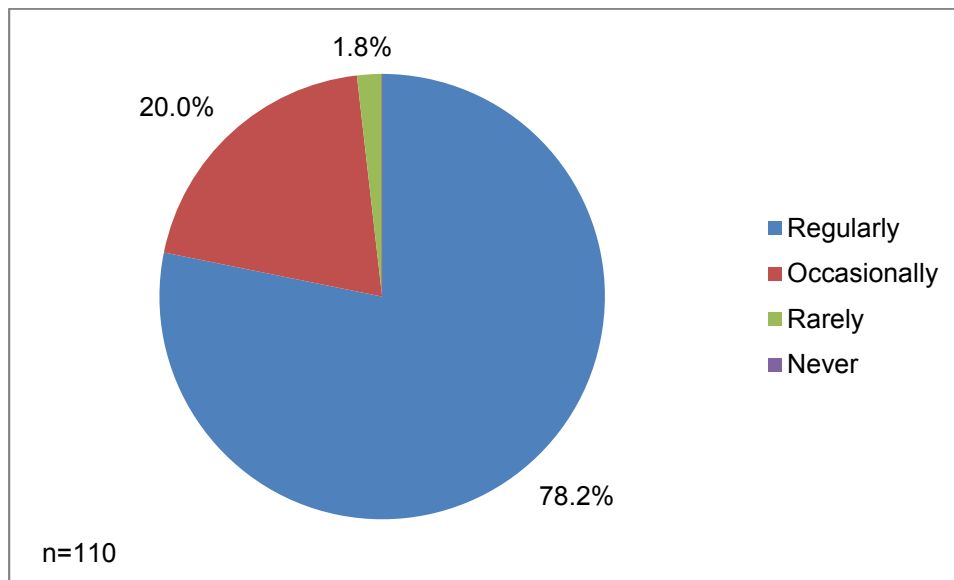
The following is a summary of responses from both the paper and online comment sheet to each question:

Question 1: Which of the following best describes how you use the North East Exchange District (study area)? (Check all that apply)



Some of the 9.8% who chose “Other” cycle through the study area, or work and/or live nearby.

Question 2: How often do you visit the North East Exchange District (study area)?

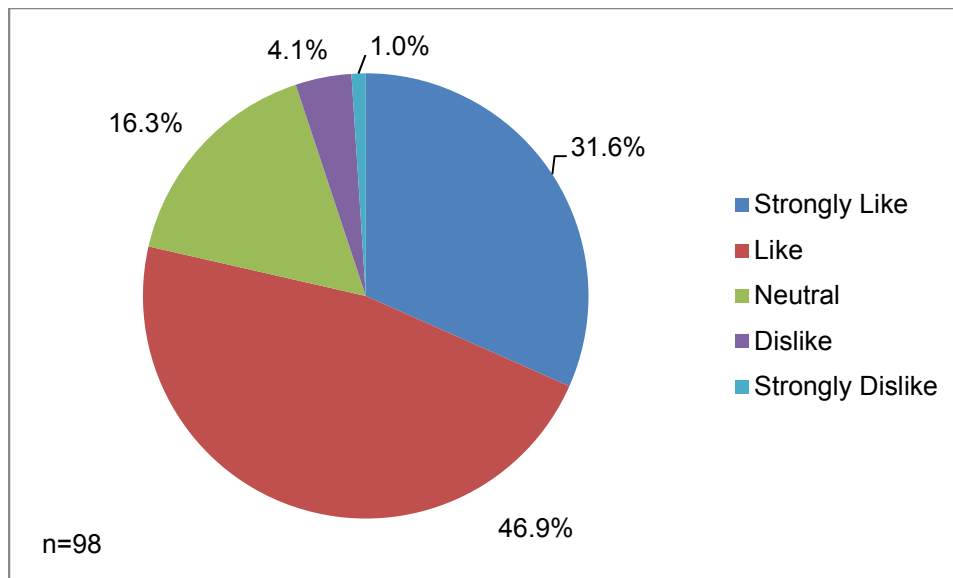


Question 3: What do you think about the changes already made to the North East Exchange District (Elgin Avenue, Rorie Street, John Hirsch Place Pedestrian Pathway, Bertha Street, and Market Avenue)?

Common responses to this question included:

- Positive feedback on the improved pedestrian experience, lighting, increased seating and preservation of historical elements (such as the rail tracks on Elgin Avenue).
- There is a need for more parking in the North East Exchange District, which has not been addressed in the work completed so far.
- Streetscaping elements, such as benches and lighting, have been damaged and require maintenance.
- A few mature trees have been removed on Rorie Street and have not been replaced.
- The lighting fixtures on Market Avenue look out of place.
- Street improvements are needed on James Avenue and Pacific Avenue from Lily Street to Waterfront Drive.
- There is a desire for dedicated cycling facilities.
- It is challenging for vehicles to turn at Bertha Street and Market Avenue.

Question 4: What do you think about the proposed improvements for Lily Street?

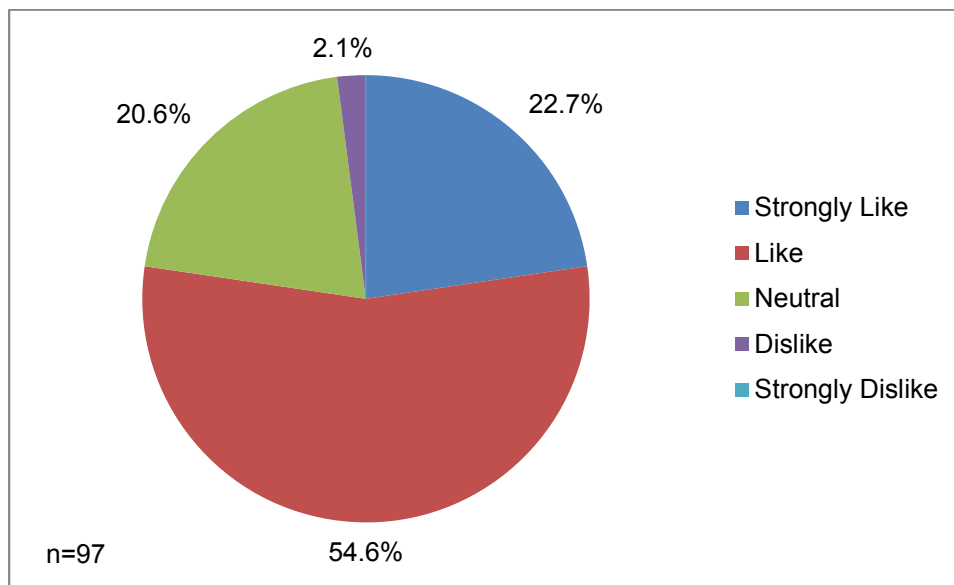


Common responses to this question included:

- Positive feedback on the proposed pedestrian crossing, lighting upgrades, widened sidewalks, double street trees, public art integration and increased pedestrian linkages.

- There is a need for more parking throughout the area, especially on event nights. Many residents noted that their guests have difficulty finding parking when visiting. Many respondents inquired about the status of the proposed parkade on Lily Street and James Avenue.
- There is a desire for more services, businesses, and amenities on Lily Street.
- There is a desire for dedicated cycling facilities, including bike lanes and bike racks.
- There are concerns about the impact of the widened sidewalks on semi-truck access and loading at the Concert Hall.
- There are concerns about heavy traffic and vehicle speeds. Some respondents suggested narrower street widths and lower speed limits would mitigate these concerns.
- There are concerns regarding safe crosswalk locations for pedestrians with visual impairments.

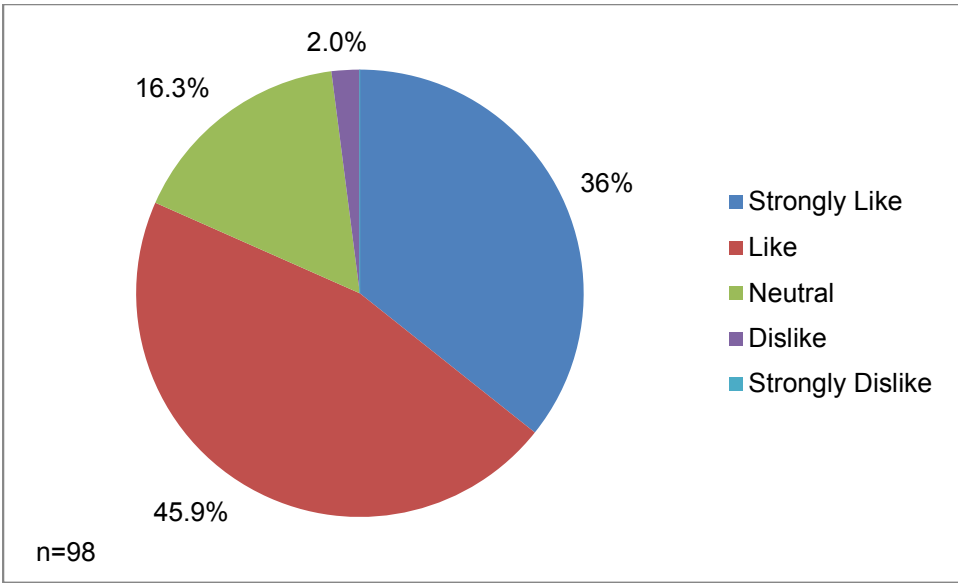
Question 5: What do you think about the proposed improvements for Pacific Avenue?



Common responses to this question included:

- Positive feedback on the proposed lighting upgrades, trees, bike racks, patios and interpretive spaces.
- There is a desire to have the work continue east of Lily Street towards Waterfront Drive.
- There is a need for more parking in the area, especially with the upcoming Canada Summer Games.
- Many vehicles are loading and double parking near the daycare.
- There are concerns about transit staging and congestion.
- There is a desire for dedicated cycling facilities, including bike lanes and bike racks.

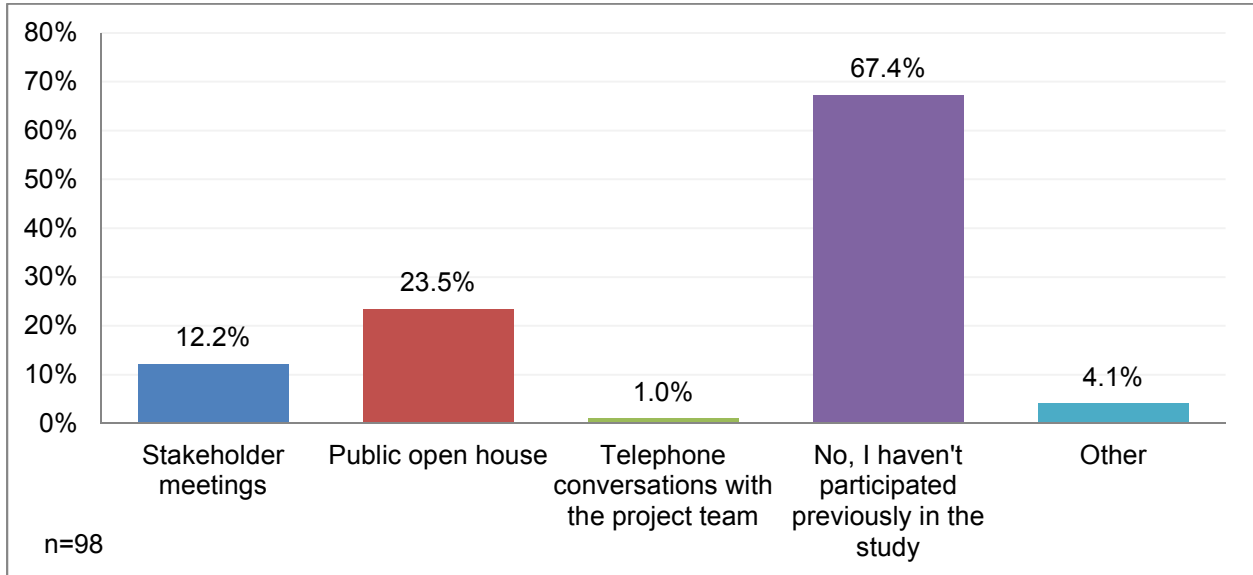
Question 6: What do you think about the proposed improvements for John Hirsch Place?



Common responses to this question included:

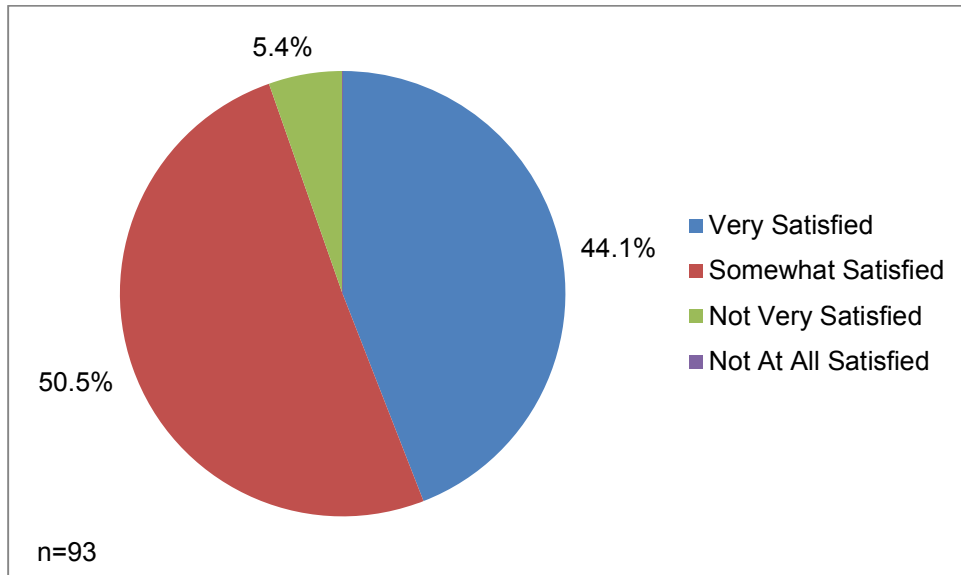
- Positive feedback on the shared street concept and proposed patio spaces, lighting upgrades, shade spaces, community gardens and drainage concept, and the potential for improved safety and security on the street.
- There is a strong desire to extend the work to the west side of John Hirsch.
- There are concerns about traffic speeds, accessibility, and pedestrian safety on the shared street, some of which could be mitigated through signage.
- There are concerns that vehicles would park and load in seating and patio areas.
- Make John Hirsch a pedestrian only street, or restrict vehicles and parking with bollards.
- There are concerns about light pollution.
- Some respondents had questions about the usability and practicality of the design, and whether or not it is a worthwhile investment
- There is a need for dedicated cycling facilities, including bike lanes and bike racks.

Question 7: Have you participated in any of the previous North East Exchange District Engineering Study public engagement opportunities?



Others (4.1%) could not recall if they had participated or had other members of their organization participate in the past.

Question 8: Overall, how satisfied are you with this open house?



Question 9: Please provide any additional comments or concerns.

Common responses to this question included:

- Add stop signs at Rorie Street and John Hirsch Place, and Market Avenue and Lily Street.
- Additional parking is needed in the area. In particular, a parkade on James Avenue would be desirable.
- Better snow clearing on sidewalks is needed.
- Streetscaping, art, and lighting need to be maintained.
- Extend the work on John Hirsch to the west.
- Upgrades to James Avenue should be a priority.
- There is a lack of services, amenities and places to go after events in the area.
- More lighting is needed to increase the feeling of safety/security. There are some concerns about light pollution from the heritage-style fixtures.
- There is a desire for bike lanes, more bike racks, and safe connections to Disraeli and Point Douglas. If there are no dedicated bike lanes, reduce the bulb outs at the intersection as they tend to push bicyclists toward the traffic.
- Prioritize universal design and accessibility.
- There are concerns about construction timing and the impact on events such as Fringe Festival.

4.0 Key Themes

The following is a summary of the key themes generated from the stakeholder meetings, open house and comment sheets:

Future Work

- There is a desire to extend street improvements on Pacific from Lily to Waterfront, on John Hirsch west of Rorie, and on James Avenue.

Parking and Loading

- There is a need for more parking in the area, especially with increased residential population, visitors and events.
- There are concerns about double parking and loading on Pacific Avenue and John Hirsch Place.
- Accessible loading is needed on Lily Street near the Concert Hall and near the Children's House daycare.
- Large vehicle loading needs to be accommodated on Lily Street (Concert Hall) and John Hirsch Place (Manitoba Theatre Centre and Cavalier Candies).

Maintenance

- Consistent snow removal is needed to maximize the usability of proposed designs.
- Streetscaping and enhancements need to be maintained.
- Private parking lots are in need of repair and improved lighting.

Lighting

- Improved pedestrian lighting is needed.
- The lighting fixtures on Market Avenue look out of place.
- There are concerns about light pollution.

Safety and Security

- There are concerns regarding safe crosswalk locations for pedestrians with visual impairments.
- Add stop signs on Rorie Street at John Hirsch Place, and on Market Avenue at Lily Street.

Traffic

- Concerns about traffic and pedestrian safety at peak event times, transit staging and congestion, and pedestrian safety on the John Hirsch Place shared street.

Services / Amenities

- There is a desire for more services, businesses, and amenities in the area.

Cycling Facilities

- There is a desire for dedicated cycling facilities, including bike lanes and bike racks, and safe connections to Disraeli and Point Douglas.

Construction Timing

- There are concerns about construction timing and the impact on events such as Fringe Festival.

Appendix A

Stakeholder Meeting Invitations

THE NORTH EAST EXCHANGE DISTRICT ENGINEERING STUDY

DETAILED DESIGN FOR LILY STREET AND PACIFIC AVENUE



Please join us for an upcoming meeting to discuss proposed street improvements for Lily Street and Pacific Avenue.

The City of Winnipeg retained MMM Group, along with HTFC Planning & Design, to work on the detailed design for Lily Street for tentative construction in Spring 2016 and Pacific Avenue for tentative construction in Spring 2017. This work is part of the overall engineering study for the North East Exchange District to provide the City with a guide for providing prioritized, coordinated infrastructure (roads, sidewalks, bike paths, street furniture, landscaping, etc.) improvements to the area. A draft North East Exchange District Engineering Study was prepared in January 2015. We would like to meet with you to discuss the proposed designs and collect your input to help refine the details for these streets.

In recent years, the North East Exchange (see map on reverse) has seen significant growth pressures, with more development adding employees, residents and visitors to the area. This places a greater demand on the area roadways, services, and pedestrian/cycling facilities, many of which have already been identified as possible rehabilitation/replacement projects.

Stakeholder Meeting

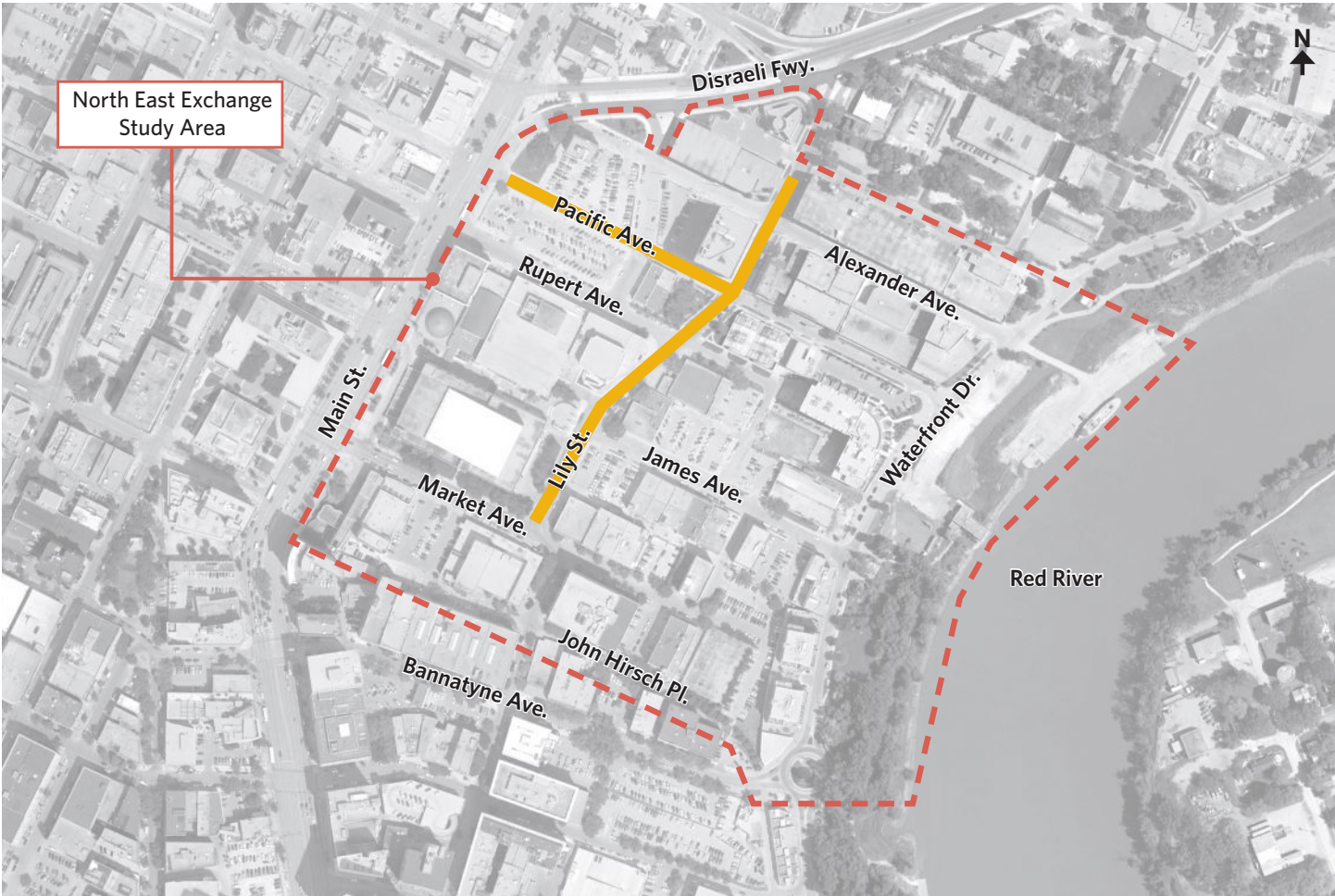
Key stakeholders will have the opportunity to provide input into the proposed street designs. At this meeting, we will provide you with background information on the project and ask for your input on the infrastructure improvements for Lily Street and Pacific Avenue. The goal is to get valuable input from you to help us find synergies and complementary ideas to help achieve the best possible design.

Date: Thursday, November 26, 2015
Time: 2:00 p.m. to 4:00 p.m.
Location: Sport for Life Centre
145 Pacific Avenue
Format: Presentation & Round Table Discussion

Please kindly RSVP to: Ryan Segal, MMM Group at segalr@mmm.ca or 204.943.3178

We look forward to hearing your input. If you have any questions, feel free to contact us at the above email address or phone number.





North East Exchange
Study Area

Disraeli Fwy.

Pacific Ave.

Alexander Ave.

Rupert Ave.

Main St.

Waterfront Dr.

James Ave.

Market Ave.

Lily St.

Red River

Bannatyne Ave.

John Hirsch Pl.



THE NORTH EAST EXCHANGE DISTRICT ENGINEERING STUDY DETAILED DESIGN FOR JOHN HIRSCH PLACE



Please join us for an upcoming meeting to discuss proposed street improvements for John Hirsch Place.

The City of Winnipeg retained MMM Group, along with HTFC Planning & Design, to work on the detailed design for John Hirsch Place for tentative construction in Spring 2016. This work is part of the overall engineering study for the North East Exchange District to provide the City with a guide for providing prioritized, coordinated infrastructure (roads, sidewalks, bike paths, street furniture, landscaping, etc.) improvements to the area. A draft North East Exchange District Engineering Study was prepared in January 2015. We would like to meet with you to discuss the proposed designs and collect your input to help refine the details for this street.

In recent years, the North East Exchange (see map on reverse) has seen significant growth pressures, with more development adding employees, residents and visitors to the area. This places a greater demand on the area roadways, services, and pedestrian/cycling facilities, many of which have already been identified as possible rehabilitation/replacement projects.

Stakeholder Meeting

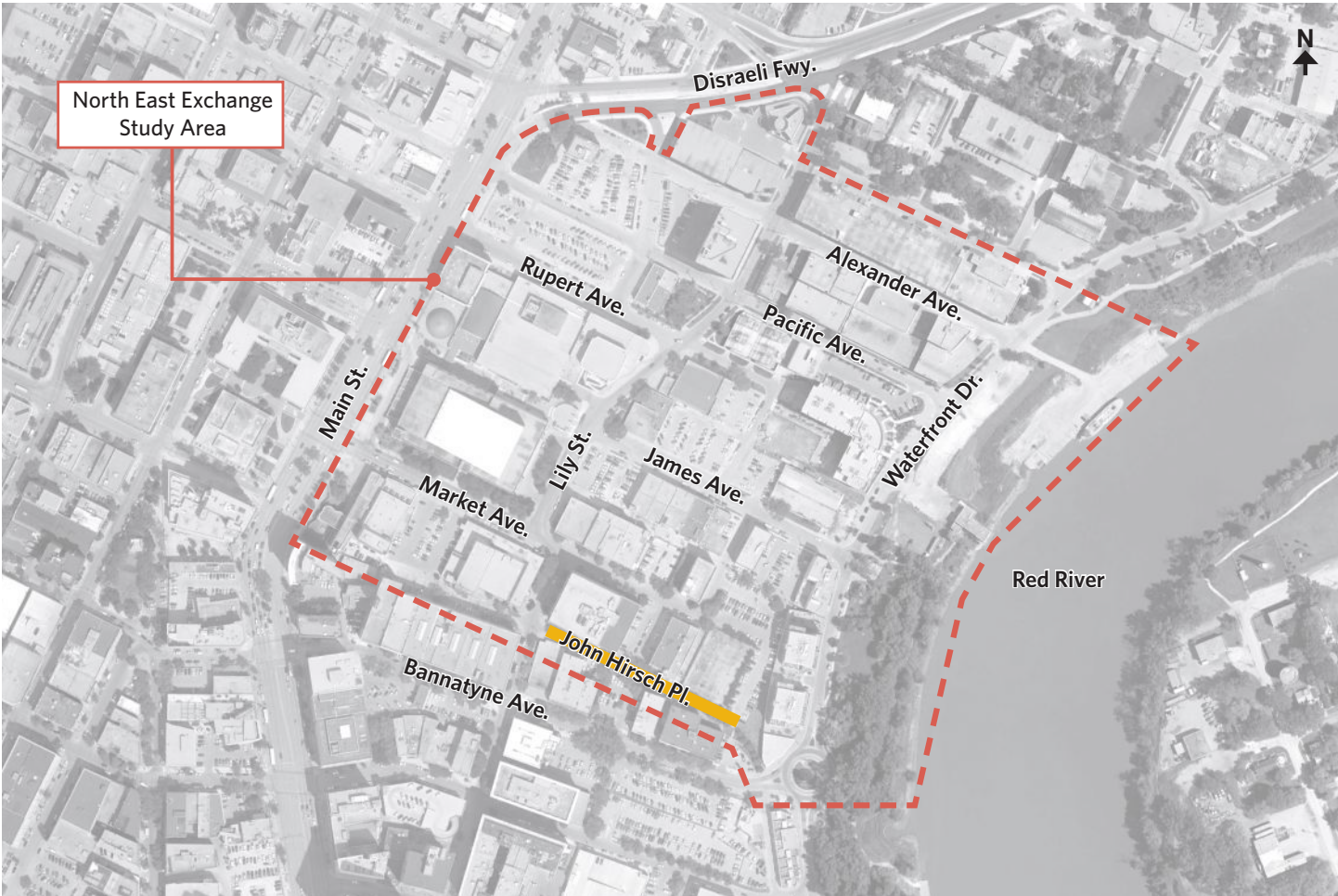
Key stakeholders will have the opportunity to provide input into the proposed street designs. At this meeting, we will provide you with background information on the project and ask for your input on the infrastructure improvements for John Hirsch Place. The goal is to get valuable input from you to help us find synergies and complementary ideas to help achieve the best possible design.

Date: Thursday, November 26, 2015
Time: 6:00 p.m. to 8:00 p.m.
Location: Sport for Life Centre
145 Pacific Avenue
Format: Presentation & Round Table Discussion

Please kindly RSVP to: Ryan Segal, MMM Group at segalr@mmm.ca or 204.943.3178

We look forward to hearing your input. If you have any questions, feel free to contact us at the above email address or phone number.





North East Exchange
Study Area

Disraeli Fwy.



Rupert Ave.

Alexander Ave.

Main St.

Pacific Ave.

Lily St.

James Ave.

Waterfront Dr.

Market Ave.

Red River

John Hirsch Pl.

Bannatyne Ave.

John Hirsch Place

List of Invited Stakeholders

BUSINESS/ORGANIZATION	INVITATION METHOD
Allied Properties REIT	Mail and Email
HTFC Planning & Design	Mail and Email
Online Business Systems	Mail and Email
Arnott & Associates	Mail and Email
Number Ten Architectural Group	Mail and Email
Onyx Financial Group	Mail and Email
Kris Swedlo	Mail and Email
Corrientes Argentine Pizzeria	Mail
Manitoba Association of Architects	Mail and Email
John Giavedoni	Mail and Email
Boon Burger Café	Mail and Email
Centre For Labour - Margen Development	Mail and Email
Prairie Architects Inc.	Mail and Email
Health in Common	Mail and Email
Acuity HR Solutions	Mail and Email
Function Four	Mail
Hollis Wealth	Mail and Email
Stalker Financial Group	Mail and Email
Blue Chip Logistics	Mail and Email
National Screen Institute	Mail and Email
Ashdown Building	Mail and Email
Leo Gromoutis	Mail and Email
Simply Green Home Services	Mail
Epic Escape	Mail and Email
Associate Contact Services Inc.	Mail
Centric Productions	Mail and Email
Fanfare Magazine Group	Mail and Email
Union Sound Hall	Mail and Email
Manitoba Family Services	Mail
Shelter Canadian Properties Ltd.	Mail and Email
Manitoba Infrastructure and Transportation Department	Mail and Email
Ager Little Architects Inc.	Mail and Email
Ager Little Architects Inc.	Mail and Email
Complex Games	Mail and Email
Stambrook & Associates	Mail and Email
MOGO	Mail and Email

LM Architectural Group	Mail and Email
Legal Aid Manitoba - Agassiz Community Law Centre	Mail and Email
Manitoba Building Trades	Mail
Albert Cheung	Mail and Email
IMPARK	Mail and Email
Skylight Books	Mail
Billinkoff Management	Mail
Exchange District BIZ	Mail and Email

Lily Street and Pacific Avenue

List of Invited Stakeholders

BUSINESS/ORGANIZATION	INVITATION METHOD
Centennial Concert Hall	Mail and Email
Streetside Development	Mail and Email
Leon A Brown	Mail and Email
Peg Beer Co.	Mail and Email
Royal Manitoba Theatre Centre	Mail and Email
Sport Manitoba	Mail and Email
Joe and Lily Coffee	Mail and Email
Entegra Credit Union	Mail and Email
Martha Street Studio	Mail and Email
Ukrainian Cultural and Educational Centre	Mail and Email
Children's House Montessori	Mail and Email
Manitoba Museum	Mail and Email
Winnipeg Architecture Foundation	Mail and Email
WH Escott Co.	Mail and Email
Manitoba Infrastructure and Transportation	Mail and Email
Manitoba Cultural and Heritage	Mail and Email
Manitoba Municipal Government	Mail and Email
Exchange District BIZ	Mail and Email

Appendix B

Stakeholder Meeting Reports

**North East Exchange District Engineering Study
Detailed Design for Lily Street and Pacific Avenue
Stakeholder Meeting**

Date:

Thursday, November 26, 2015

Time:

2:00 – 4:00 PM

Location:

Sport Manitoba, Conference Room

Attendees:

- Children's House
- Sport Manitoba
- Leon A Brown
- NumberTen Architecture
- Manitoba Infrastructure and Transportation, Province of Manitoba
- PEG Beer Co.
- Manitoba Centennial Centre Corporation
- Manitoba Municipal Government, Province of Manitoba

- David Jopling MMM Group
- Ryan Segal MMM Group
- Richard Tebinka MMM Group
- Vilko Maroti MMM Group
- Glen Manning HTFC Planning & Design
- James Hudson HTFC Planning & Design
- Scott Suderman City of Winnipeg
- Marsha Christiuk City of Winnipeg
- Loretta Martin CentreVenture
- Johanna Chabluk CentreVenture

Agenda:

1. Introduction
2. Presentation
3. Round Table Discussion

Intent of Meeting:

This meeting provided an opportunity for key stakeholders (property owners, tenants and residents) to review the proposed designs for Lily Street and Pacific Avenue and provide their feedback. In particular, the intent of the meeting was to find synergies and complementary ideas to help achieve the best possible design, verify new development interest or changes to anticipated development plan, and verify loading requirements and private access.

Format of Meeting:

The event began with a presentation on the background and intent of the study, work completed to-date, and an overview of the proposed designs. This was followed by a facilitated group discussion, where specific design details were discussed.

Feedback:

The following feedback was generated from the discussions:

➤ **Streetscaping**

- Streetscaping, benches and garbage locations will be finalized in detailed design
- Is it possible to incorporate seating near the Hydro station?

➤ **Signage**

- Will proposed wayfinding be just for the North East Exchange or all of downtown?
- Is it possible to have directional signage to Sport for Life Centre parking?
- Current street signage is too small

➤ **Lighting**

- Possibility of lighting on buildings if there is private investment for enhancements
- Lighting on buildings on Elgin is good
- More lighting is needed on both streets

➤ **Arts and Culture**

- Is there potential to make Lily an “outdoor artist alley”?
- Could artwork be integrated into infrastructure – e.g., manhole covers

➤ **Traffic**

- Concerns about safety at peak event times
- There are event management issues after flow out of performances
- Would it be possible to temporarily close streets with bollards?

➤ **Bike Lanes**

- Are there bike lanes proposed for these streets?
- Where will bikes connect through the area?

➤ **Transit**

- Will there be changes required to Transit’s staging plans?
- Where will buses queue?
- Can they pick up people on Lily?

➤ **Accessible Drop Off**

- Accessible drop off is currently in front of Steinkopf garden – where the raised intersection is proposed
- Can the accessible drop off be relocated elsewhere?

➤ **Peg Beer Co**

- Peg Beer Co is building a screened raised patio the spring
- Grade changes will be required
- Construction will be coordinated with City road work

➤ **Concert Hall**

- Concert Hall trucks (53') back in from James – two can unload at a time, others stage on James and other nearby locations
- Concert Hall tour buses park on driveway
- There is a backlog of vehicles exiting the Concert Hall parkade – one lane for turning left onto James, one to go straight

➤ **Children's House**

- Children's House would like loading zone to remain
- Pick-up challenging with 15 minute loading
- Buses use Martha
- Garbage pick-up approach will stay
- Children's house has experienced challenges with sewer capacity
- Water line already upgraded on Pacific
- There are opportunities for fencing enhancements around playground

➤ **Sport Manitoba**

- Will cargo vans, cube trucks be able to still use Sport Manitoba approach?
- MMM will run auto-turn for this approach

➤ **Future Work**

- City will push study area beyond Galt if there are development pressures in the future
- Can Pacific be continued east of Lily? City will build bump out, tie into existing curb
- Leon A Brown paid to repave Pacific – Would the city finish tie-in on Pacific and 20-30 ft to driveway?

**North East Exchange District Engineering Study
Detailed Design for John Hirsch Place
Stakeholder Meeting**

Date:

Thursday, November 26, 2015

Time:

6:00 – 8:00 PM

Location:

Sport Manitoba, Conference Room

Attendees:

- Allied REIT
- Three residents, Ashdown Building
- Owner, 112 Market Avenue
- Owner, 90 Market Avenue
- Shindico
- Resident, 137 Bannatyne Avenue
- Resident, 133 Market Avenue
- R:ED, Residents of the Exchange District

- David Jopling MMM Group
- Ryan Segal MMM Group
- Richard Tebinka MMM Group
- Vilko Maroti MMM Group
- Glen Manning HTFC Planning & Design
- James Hudson HTFC Planning & Design
- Scott Suderman City of Winnipeg
- Marsha Christiuk City of Winnipeg
- Loretta Martin CentreVenture

Agenda:

1. Introduction
2. Presentation
3. Round Table Discussion

Intent of Meeting:

This meeting provided an opportunity for key stakeholders (property owners, tenants and residents) to review the proposed design for John Hirsch Place and provide their feedback. In particular, the intent of the meeting was to find synergies and complementary ideas to help achieve the best possible design, verify new development interest or changes to anticipated development plan, and verify loading requirements and private access.

Format of Meeting:

The event began with a presentation on the background and intent of the study, work completed to-date, and an overview of the proposed design. This was followed by a facilitated group discussion, where specific design details were discussed.

Feedback:

The following feedback was generated from the discussions:

➤ **General**

- Like the overall design concept
- Like that there places to sit by south side parking lot
- Like the idea of a shared street
- Most people understand that they have to co-exist on a shared street

➤ **West Side of John Hirsch**

- Is there a timeline for work on the west side of John Hirsch?
- Can the west be prioritized in the next phase of the NE Exchange?
- Concern about the west being neglected and there may be more traffic than the study suggests

➤ **Proposed Patio Spaces**

- There was once a patio behind 112 Market that was taken down
- Concern about showing patio on private parking spots in plans
- It will be challenging to get people to give up private spots

➤ **Loading/Parking**

- Concern about congestion due to a narrower street
- Will there be room for everyone when cars/large vehicles are parked and loading
- Cars currently block the road if they are not close enough to the curb
- There is a need for loading at 112/114 Market, but time should be very restricted
- Drivers are ignoring the No Stopping signs
- Would it be possible to remove street parking?
- How can it be ensured that on street parking rules are monitored and enforced?

➤ **Traffic Direction**

- Challenging to exit on the one-way east because vehicles are stopped or loading
- Could the exit be two-way? Is there enough width to formalize a two-way street?
- Could the entire one-way be reversed?

➤ **Planting/Gardening**

- There is currently some space for planting/gardening at the parking garage
 - Currently a 9 ft x 13 ft area
 - Creates a gateway for the street
- Community gardening behind 136 Market would be desirable

➤ **Snow Removal**

- Would snow plow be able to fit through?
- Snow must be removed frequently to maximize usability of street

➤ **Lighting**

- Improved pedestrian lighting should be a priority
- Heritage fixtures glow quite bright and project light up
- Light sometimes shines into residential windows

- Is it possible to install a back piece to stop some of this light?
- Lighting on private property and buildings requires legal agreements

➤ **Parking Lots**

- Some existing fencing has been grandfathered in even though it doesn't meet By-law anymore
- No enforcement mechanism for parking lot disrepair
- Parking lot lighting is "horrible"
- CentreVenture will talk to property owners about improving/upgrading lighting in parking lot

➤ **Garbage**

- Desire for enclosed garbage
- More public garbage/recycling needed, especially near seating, and on south side of street
- Trash/recycle bins have been removed on Bannatyne, and not replaced yet

➤ **Security**

- Brass plaques have been stolen from buildings

➤ **Streetscaping**

- Bike racks are needed
- The bollards on Bertha are hard to see and have been hit by vehicles
- Can the bollards be painted or have reflective tape added to them?

Appendix C

Open House Advertisements and Invitation

OPEN HOUSE

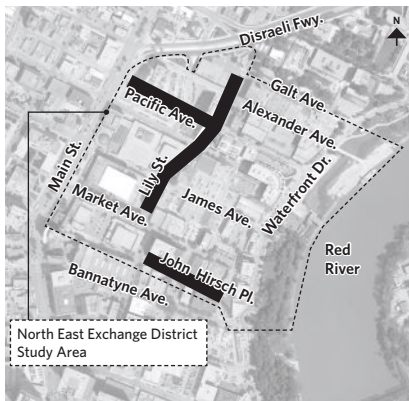
THE NORTH EAST EXCHANGE DISTRICT ENGINEERING STUDY DETAILED DESIGN FOR LILY STREET, PACIFIC AVENUE AND JOHN HIRSCH PLACE

Please join us at an upcoming open house to view proposed designs for the next phase of improvements in the North East Exchange District.

The City will present concept designs for Lily Street and parts of John Hirsch Place and Pacific Avenue. You will have an opportunity to provide input to project team members.

Highlights of the projects include:

- Renewing infrastructure.
- Embracing historical components into the design.
- Integrating art into the design of the streets.
- Widening and lining sidewalks with trees and enhanced lighting.
- Utilizing innovative and sustainable drainage designs.



Date: Thursday, January 28, 2016
Time: 4:00 p.m. to 7:00 p.m.
Location: Pantages Playhouse Theatre
180 Market Avenue
Format: Drop-in (feel free to come and go)

For more information on the project, or if you are unable to attend the event and would like to provide your input, please visit the project website at www.winnipeg.ca/northeastexchange or contact Ryan Segal, MMM Group at 204.943.3178 or segalr@mmm.ca

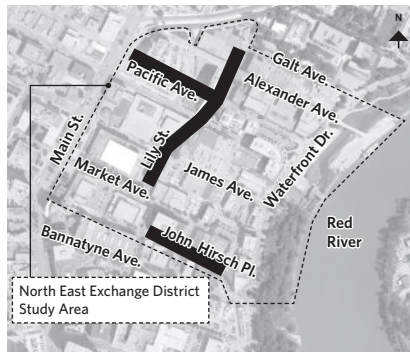
OPEN HOUSE

THE NORTH EAST EXCHANGE DISTRICT ENGINEERING STUDY DETAILED DESIGN FOR LILY STREET, PACIFIC AVENUE AND JOHN HIRSCH PLACE

Please join us at an upcoming open house to view proposed designs for the next phase of improvements in the North East Exchange District. The City will present concept designs for Lily Street and parts of John Hirsch Place and Pacific Avenue. You will have an opportunity to provide input to project team members.

Highlights of the projects include:

- Renewing infrastructure.
- Embracing historical components into the design.
- Integrating art into the design of the streets.
- Widening and lining sidewalks with trees and enhanced lighting.
- Utilizing innovative and sustainable drainage designs.



Date: Thursday, January 28, 2016
Time: 4:00 p.m. to 7:00 p.m.
Location: Pantages Playhouse Theatre
180 Market Avenue
Format: Drop-in (feel free to come and go)

For more information on the project, or if you are unable to attend the event and would like to provide your feedback, please visit the project website:
www.winnipeg.ca/northeastexchange
or contact Ryan Segal, MMM Group at
204.943.3178 or segalr@mmm.ca

OPEN HOUSE

THE NORTH EAST EXCHANGE DISTRICT ENGINEERING STUDY DETAILED DESIGN FOR LILY STREET, PACIFIC AVENUE AND JOHN HIRSCH PLACE

Please join us at an upcoming open house to view proposed designs for the next phase of improvements in the North East Exchange District. The City will present concept designs for Lily Street and parts of John Hirsch Place for tentative construction in 2016, and parts of Pacific Avenue for tentative construction in advance of the 2017 Canada Games. You will have an opportunity to provide input to project team members.

These projects are tailored to support the ongoing development and private investments in the area. Highlights of the projects include:

- Renewing infrastructure.
- Embracing historical components into the design.
- Integrating art into the design of the streets.
- Widening and lining sidewalks with trees and enhanced lighting.
- Utilizing innovative and sustainable drainage designs.

This proposed work originated from the 2014 North East Exchange District Engineering Study (see map on reverse), and follows the first successful construction phase in 2014 and 2015. The purpose of these collaborative efforts is to provide public rights-of-way that support this evolving and vibrant area.

Date: Thursday, January 28, 2016
Time: 4:00 p.m. to 7:00 p.m.
Location: Pantages Playhouse Theatre
180 Market Avenue
Format: Drop-in (feel free to come and go)

For more information on the project, or if you are unable to attend the event and would like to provide your input, please visit the project website at www.winnipeg.ca/northeastexchange or contact Ryan Segal, MMM Group at 204.943.3178 or segalr@mmm.ca





- North East Exchange Study Area
- Tentative Construction Spring 2016
- Tentative Construction Spring 2017

Appendix D Open House Boards



CITY OF WINNIPEG

NORTH EAST EXCHANGE DISTRICT ENGINEERING STUDY DETAILED DESIGN FOR LILY STREET, JOHN HIRSCH PLACE AND PACIFIC AVENUE

PUBLIC OPEN HOUSE | JANUARY 28, 2016



Welcome



Please review the boards and proposed designs.
Project staff are happy to answer your questions.

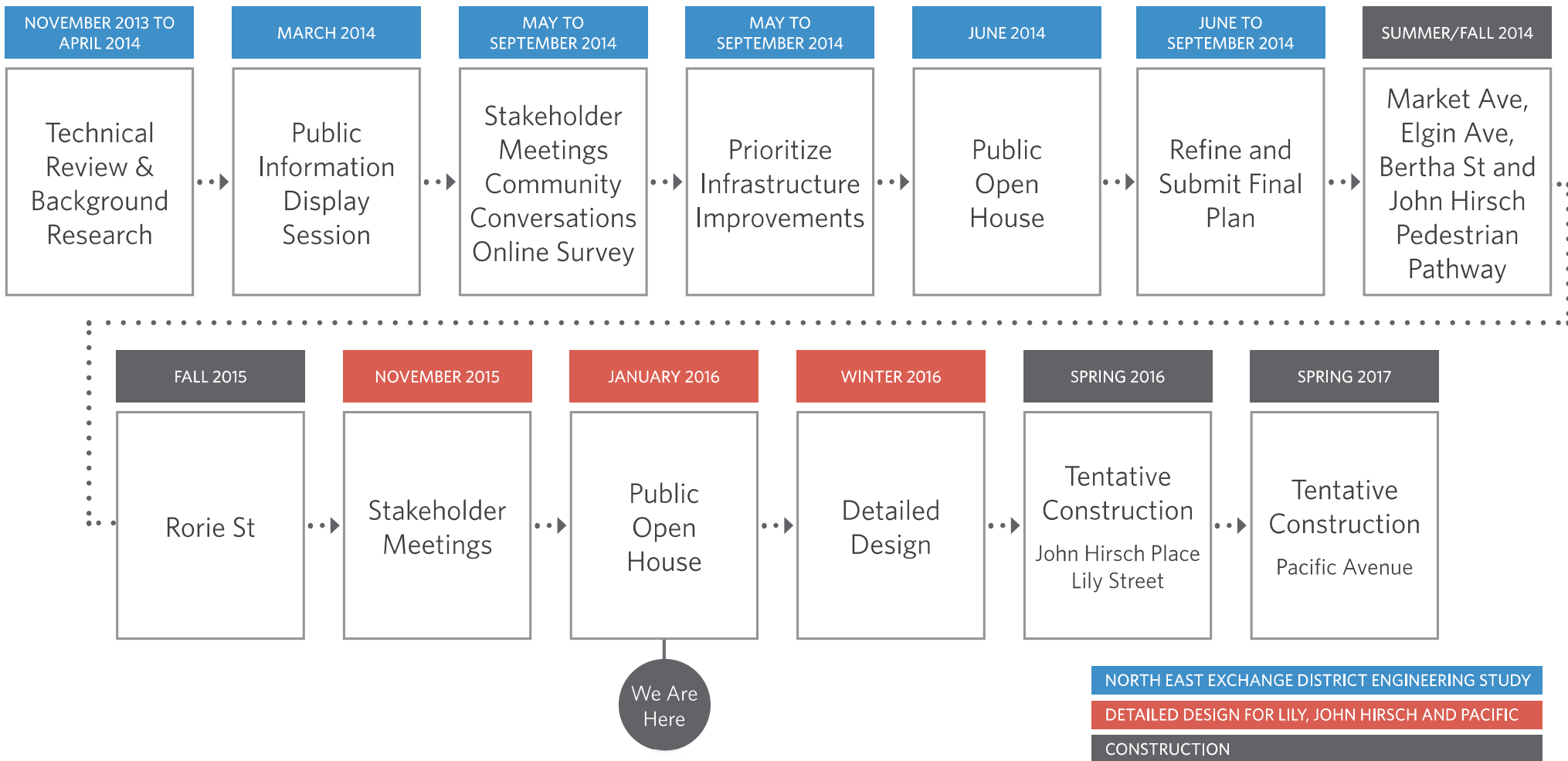
Please complete and submit a feedback form prior to leaving.

Study Background

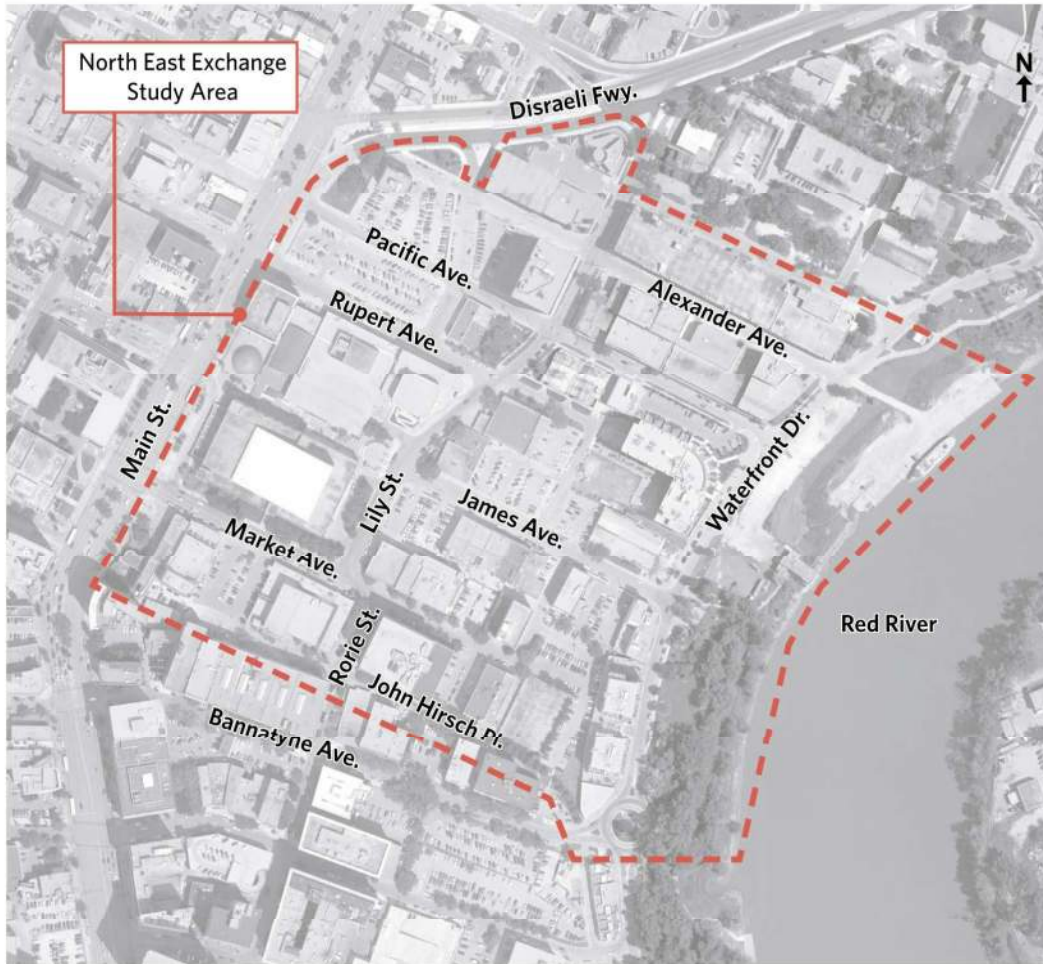
The detailed design for Lily Street, John Hirsch Place and Pacific Avenue is part of the **North East Exchange District Engineering Study**, prepared in 2014.

- » In recent years, the North East Exchange has seen significant growth pressures, with more development adding employees, residents and visitors to the area.
- » This places a greater demand on the area roadways, services, cycling amenities and pedestrian facilities, many of which have already been identified as possible rehabilitation/replacement projects.

Timeline



Study Background



- » The North East Exchange District Engineering Study is a guide to help the City provide prioritized, coordinated infrastructure improvements to the area, including roads, parking, sidewalks, bicycle amenities, transit amenities, watermains, underground services and utilities, street trees and street furniture.

Completed Work



Elgin Avenue



Rorie Street



Market Avenue



Bertha Street



Market Avenue



Elgin Avenue



John Hirsch Place Pedestrian Pathway



Upcoming Work



- - - North East Exchange Study Area
- Yellow Tentative Construction Spring 2016
- Green Tentative Construction Spring 2017

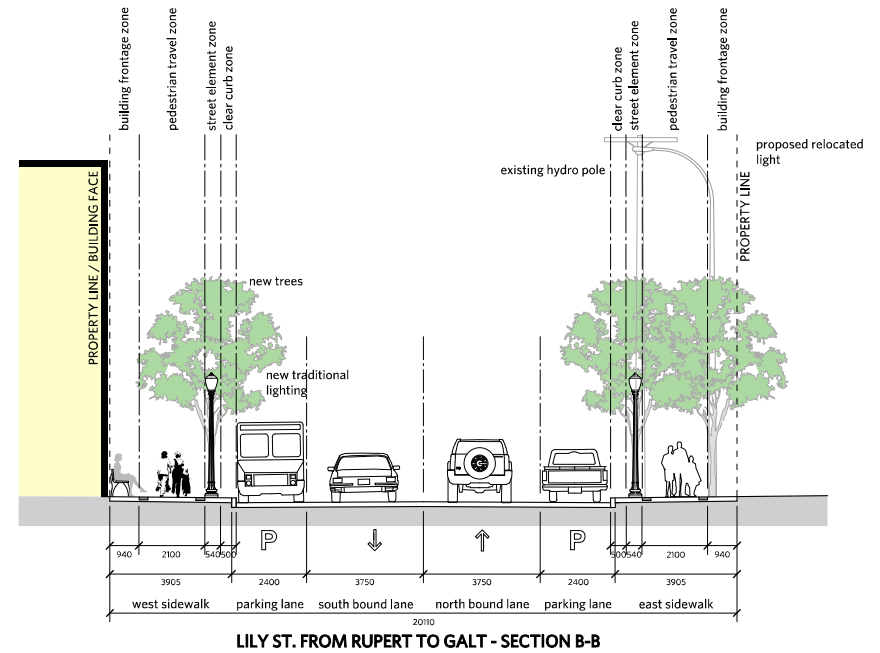
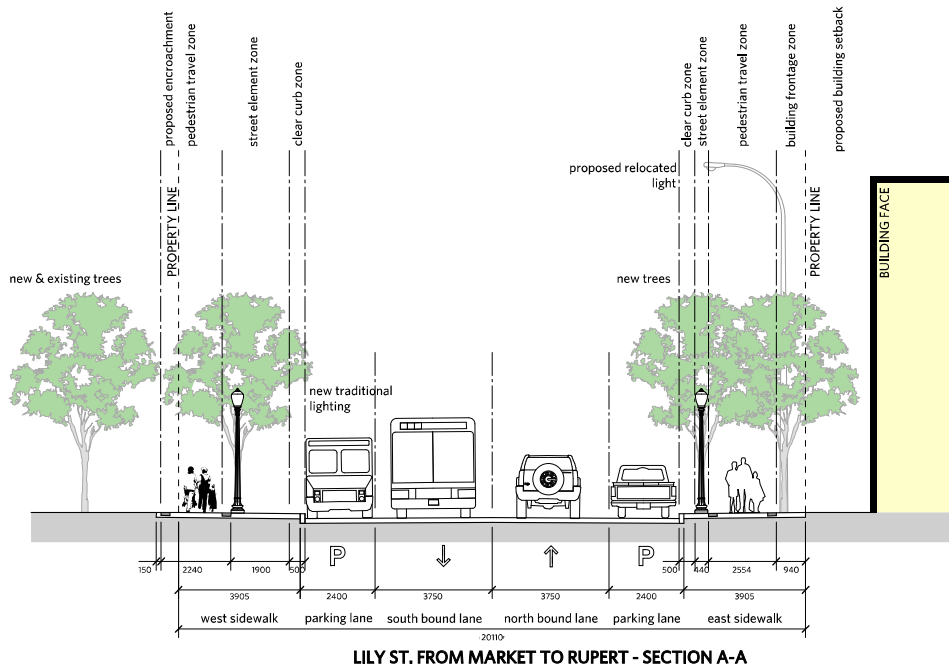
These projects are tailored to support the ongoing development and private investments in the area through:

- » Renewing infrastructure.
- » Watermain renewal.
- » Incorporating historical and cultural components into the design.
- » Integrating art into the design of the streets.
- » Widening and lining sidewalks with trees and enhanced lighting.
- » Utilizing innovative and sustainable drainage systems.

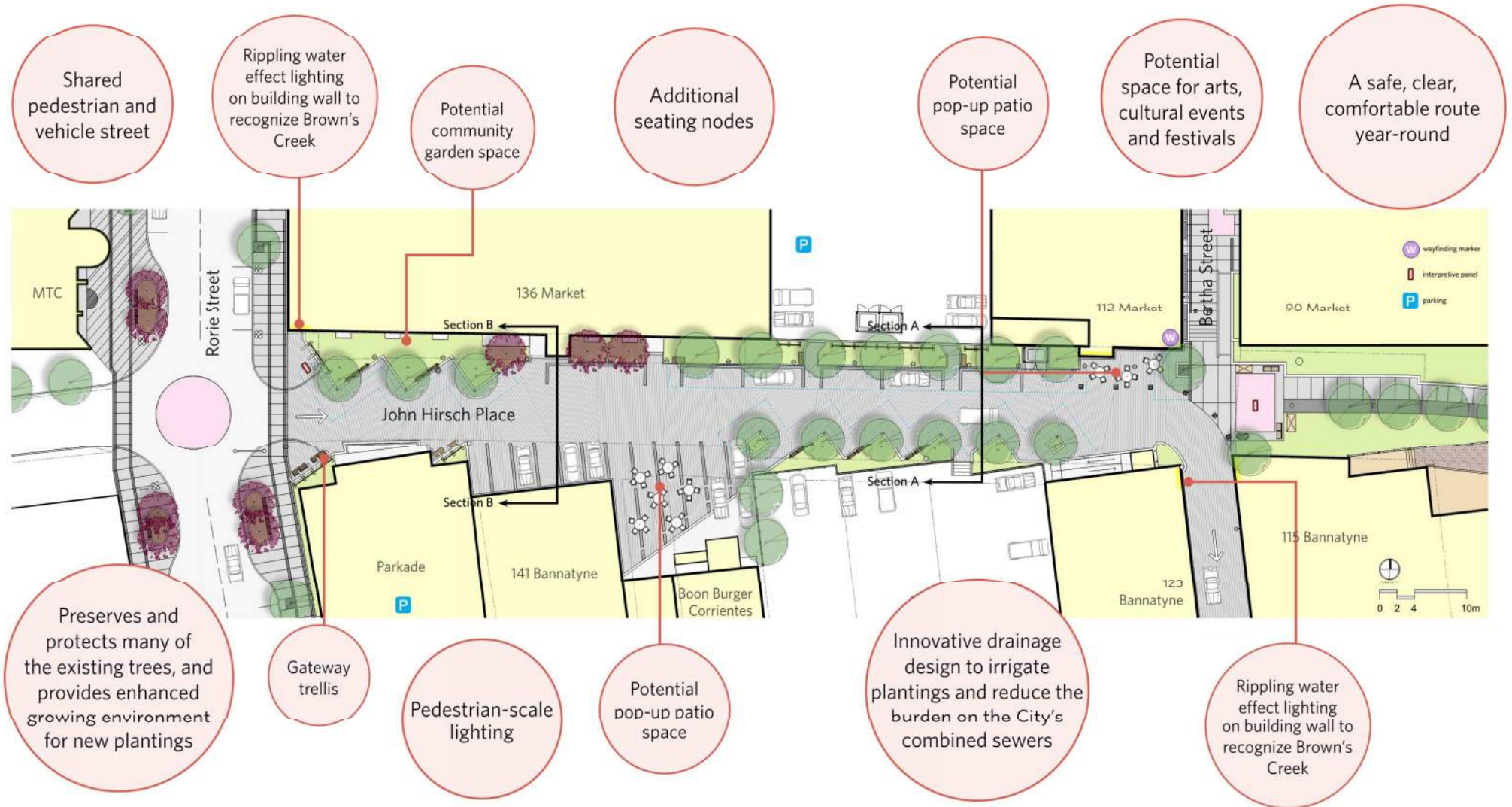
Lily Street



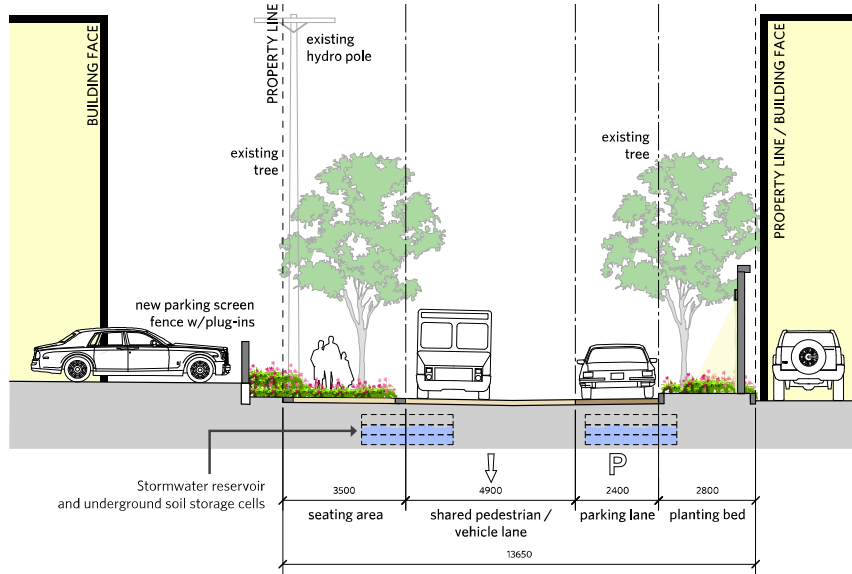
Lily Street



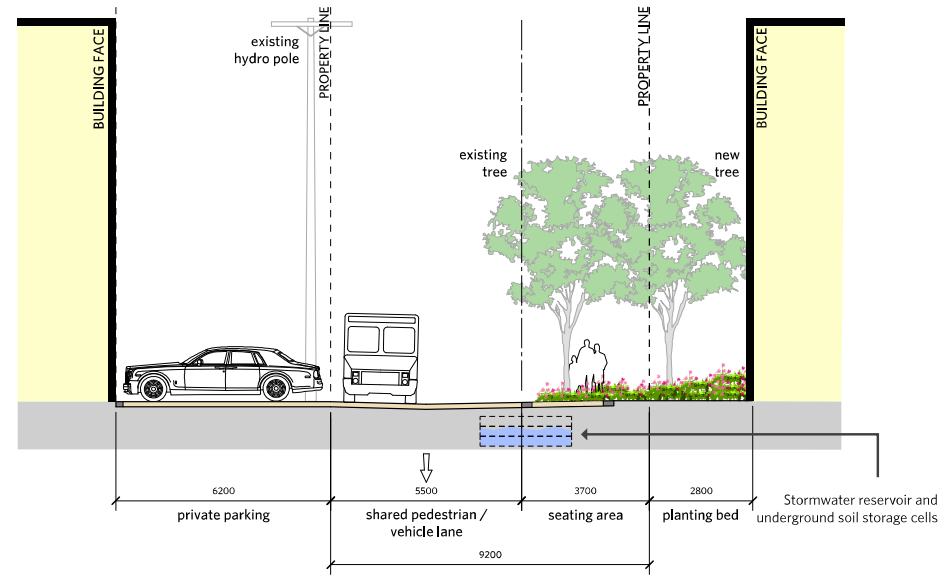
John Hirsch Place



John Hirsch Place



JOHN HIRSCH WAY SECTION A-A



JOHN HIRSCH WAY SECTION B-B

John Hirsch Place Innovative Drainage

- » The majority of the stormwater will be diverted into underground soil storage cells and absorbed by plantings.
- » Excess water during severe storms will enter the combined sewer but will, in most cases, have a chance to be cleaned through the soil strata.
- » The City will monitor the performance of this approach before and after to determine the costs and benefits of this innovative initiative.



John Hirsch Place



BIRD'S EYE VIEW LOOKING EAST

John Hirsch Place



STREET VIEW FROM RORIE LOOKING NORTHEAST

John Hirsch Place



STREET VIEW LOOKING EAST

John Hirsch Place



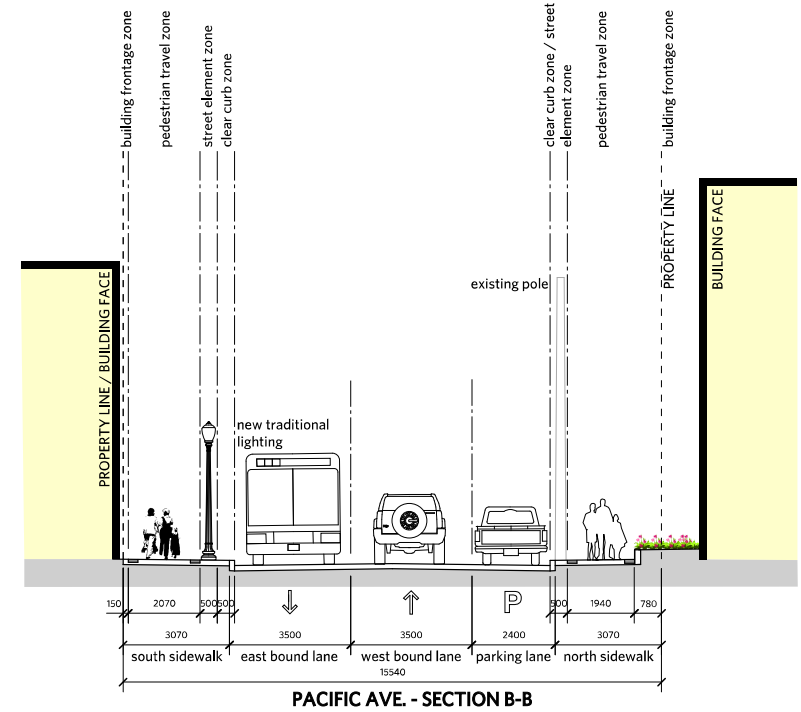
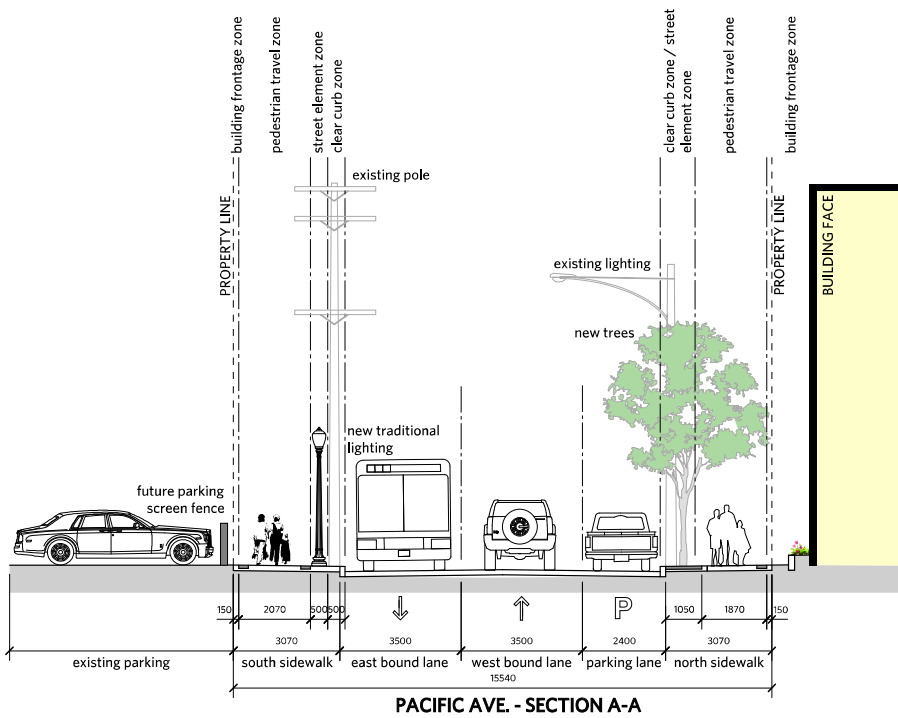
STREET VIEW LOOKING WEST FROM BERTHA

Pacific Avenue



- Interpretive node
- Proposed parking screen fence
- New trees
- Pedestrian-scale traditional-style lighting
- Bike racks
- A safe, clear, comfortable path of travel
- Patio space for coffee shop
- New streetscaping and renewed infrastructure will complement the opening of the Qualico Training Centre for the 2017 Canada Games

Pacific Avenue



Thank You



On behalf of the Project Team, thank you for your attendance and participation. Please fill out a feedback form before you leave.

For more information, contact:

Ryan Segal, MMM Group | segalr@mmm.ca | 204.943.3178

Public Engagement Lead:

David Jopling, MMM Group | joplingd@mmm.ca | 204.943.3178



**Project website:
winnipeg.ca/northeastexchange**

Appendix E

Open House Comment Sheet

North East Exchange District Engineering Study Detailed Design for Lily Street, Pacific Avenue and John Hirsch Place

1. Which of the following best describes how you use the North East Exchange District (study area)?

Check all that apply

- | | |
|-----------------------------------------------------------------------------------------|------------------------------------------------------------------------------------------------|
| <input type="checkbox"/> a. I live in the study area | <input type="checkbox"/> e. I visit the study area – shopping, theatre, visiting friends, etc. |
| <input type="checkbox"/> b. I work in the study area | <input type="checkbox"/> f. Other: _____ |
| <input type="checkbox"/> c. I own a business in the study area | |
| <input type="checkbox"/> d. I own a property, but do not live or work in the study area | |

2. How often do you visit the North East Exchange District (study area)?

- Regularly Occasionally Rarely Never

3. What do you think about the changes already made to the North East Exchange District (Elgin Avenue, Rorie Street, John Hirsch Place Pedestrian Pathway, Bertha Street, and Market Avenue)?

4. What do you think about the proposed improvements for LILY STREET?

- Strongly Dislike Dislike Neutral Like Strongly Like

Please elaborate:

5. What do you think about the proposed improvements for PACIFIC AVENUE?

- Strongly Dislike Dislike Neutral Like Strongly Like

Please elaborate:

6. What do you think about the proposed improvements for JOHN HIRSCH PLACE?

- Strongly Dislike Dislike Neutral Like Strongly Like

Please elaborate:

7. Have you participated in any of the previous North East Exchange District Engineering Study public engagement opportunities?

- a. Stakeholder meetings
 b. Public open house
 c. Telephone conversation with the project team
 d. No, I haven't participated previously in the study
 e. Other _____

8. Overall, how satisfied are you with this open house?

- Very satisfied Somewhat satisfied Not very satisfied Not at all satisfied

9. Please provide any additional comments or concerns.

Thank you for your input and participation!
For more information or to complete this feedback form online visit:
www.winnipeg.ca/northeastexchange