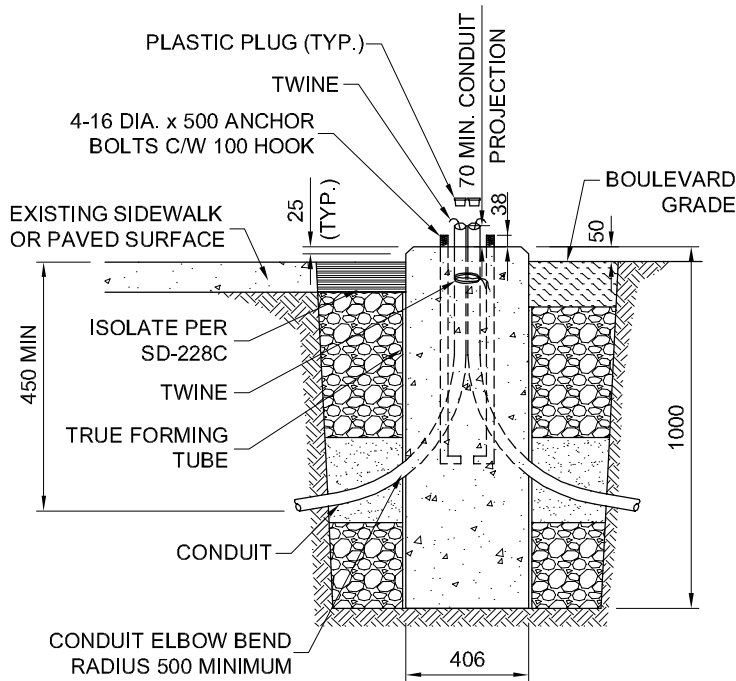
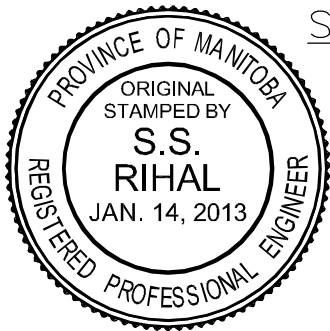


PLAN VIEW



SECTION A-A



DIMENSIONS ARE IN MILLIMETRES (UNLESS OTHERWISE NOTED)

NOTES:

1. 406 mm Ø TRUE FORMING TUBE SHALL BE USED.
2. ANCHOR BOLTS AND ANCHOR BOLT TEMPLATE TO BE SUPPLIED BY CONTRACT ADMINISTRATOR. TOP RING FORM TO BE SUPPLIED BY THE CONTRACTOR.
3. THREADED PORTION OF ANCHOR BOLTS SHALL BE PROTECTED FROM FOULING PRIOR TO CONCRETE POUR.
4. ALL CONDUITS SHALL BE BUNDLED INTO A GROUP IN CENTER OF BASE, AND TIED TOGETHER BELOW THE TOP OF THE BASE PRIOR TO CONCRETE POUR. INSTALL PLASTIC PLUGS PRIOR TO CONCRETE POUR.
5. CONTRACTOR SHALL REMOVE AND SALVAGE BASE TEMPLATE, NUTS AND TOP RING FORM, FOLLOWING A MINIMUM 24 HOUR CONCRETE CURING PERIOD.
6. FOLLOWING 24 HOUR MINIMUM CONCRETE CURING TIME, STRIP THE TOP PORTION OF THE TUBULAR CARDBOARD FORMS A MINIMUM 150mm BELOW FINISHED PAVED SURFACE OR BOULEVARD GRADE.
7. BACKFILL SHALL CONFORM TO REQUIREMENTS OF SD-342.
8. BOLT PROJECTION: 38 (-0, +5) mm.
9. CONCRETE SHALL CONFORM TO REQUIREMENTS OF CW 2160 (LATEST EDITION) FOR TYPE A STRUCTURES (MONOLITHIC SEWERS AND REINFORCED STRUCTURES).
10. REFER TO INTERSECTION DESIGN DRAWINGS AND SD-318 FOR ALIGNMENT OF ANCHOR BOLTS.



THE CITY OF WINNIPEG
PUBLIC WORKS DEPARTMENT

Reference Spec. No.
CW 3620-R5

SIGNAL POLE BASE – TYPE L
(CYCLIST PUSHBUTTON)

Revisions

No.	Date	Description	By
2	3/5/13	REVISED BY DILLON CONSULTING	CDW
1	1/14/13	DESIGNED BY DILLON CONSULTING	CDW

Designed By: SSR	Drawn By: JLD	Scale : N.T.S.
Checked By: -	Date: 1/14/13	Drawing No.
Approved:		SD-315