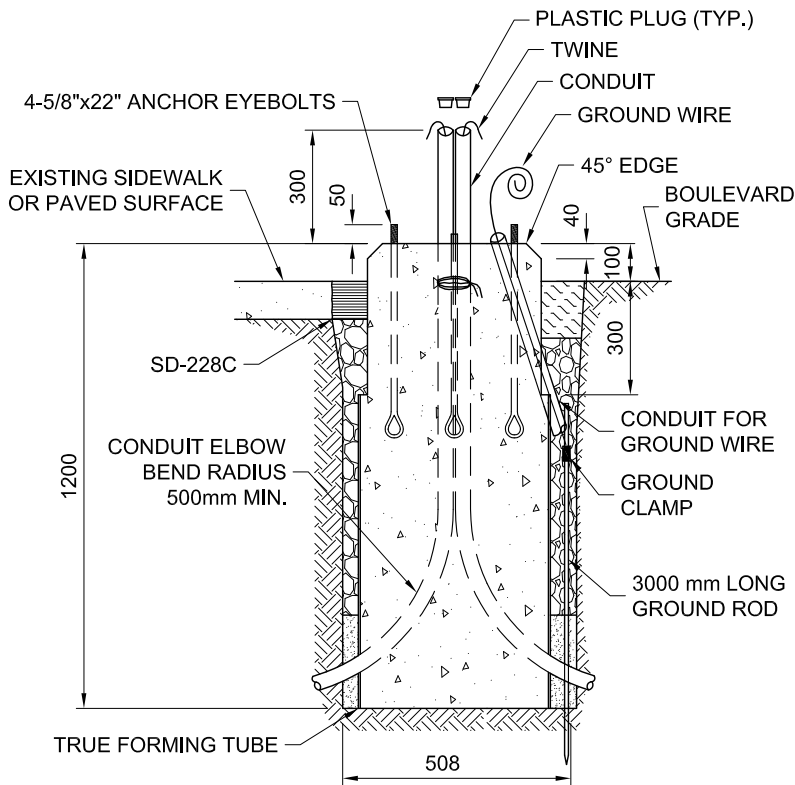


PLAN



SECTION A-A

NOTES:

1. 508 mm Ø TRUE FORMING TUBE SHALL BE USED.
2. ANCHOR BOLT TEMPLATE TO BE SUPPLIED BY CONTRACT ADMINISTRATOR.
3. THREADED PORTION OF ANCHOR EYEBOLTS SHALL BE COATED WITH OIL PRIOR TO CONCRETE POUR.
4. ALL CONDUITS SHALL BE BUNDLED INTO A GROUP IN CENTRE OF BASE, AND TIED TOGETHER BELOW THE TOP OF THE BASE PRIOR TO CONCRETE POUR. INSTALL PLASTIC PLUGS PRIOR TO CONCRETE POUR.
5. INSTALL GROUND ROD IN EVERY BASE. INSTALL GROUND CLAMP AND WIRE TO TOP OF GROUND ROD AND RUN THROUGH CONDUIT. PROVIDE 1000mm OF GROUND WIRE PROTRUDING FROM TOP OF CONDUIT.
6. CONTRACTOR SHALL REMOVE AND SALVAGE BASE TEMPLATE, NUTS AND REMOVE FORMS FOLLOWING A MINIMUM 24 HOUR CONCRETE CURING PERIOD.
7. BACKFILL SHALL CONFORM TO REQUIREMENTS OF SD-342.
8. CONCRETE SHALL CONFORM TO REQUIREMENTS OF CW 2160 (LATEST EDITION) FOR TYPE A STRUCTURES (MONOLITHIC SEWERS AND REINFORCED STRUCTURES).
9. REFER TO INTERSECTION LAYOUT DRAWING FOR ALIGNMENT OF ANCHOR BOLTS.
10. AS OF OCTOBER 2012, NO NEW TERMINAL PEDESTALS TO BE INSTALLED.

DIMENSIONS ARE IN MILLIMETRES
(UNLESS OTHERWISE NOTED)



THE CITY OF WINNIPEG
PUBLIC WORKS DEPARTMENT

Reference Spec. No.
CW 3620-R5

TERMINAL PEDESTAL BASE

Revisions

No.	Date	Description	By
1	12/11/14	REVISED BY DILLON CONSULTING	DBW

Designed By: C.K.	Drawn By: A.R.	Scale : N.T.S.
Checked By: -	Date: 95-03-01	Drawing No.
Approved:		SD-304