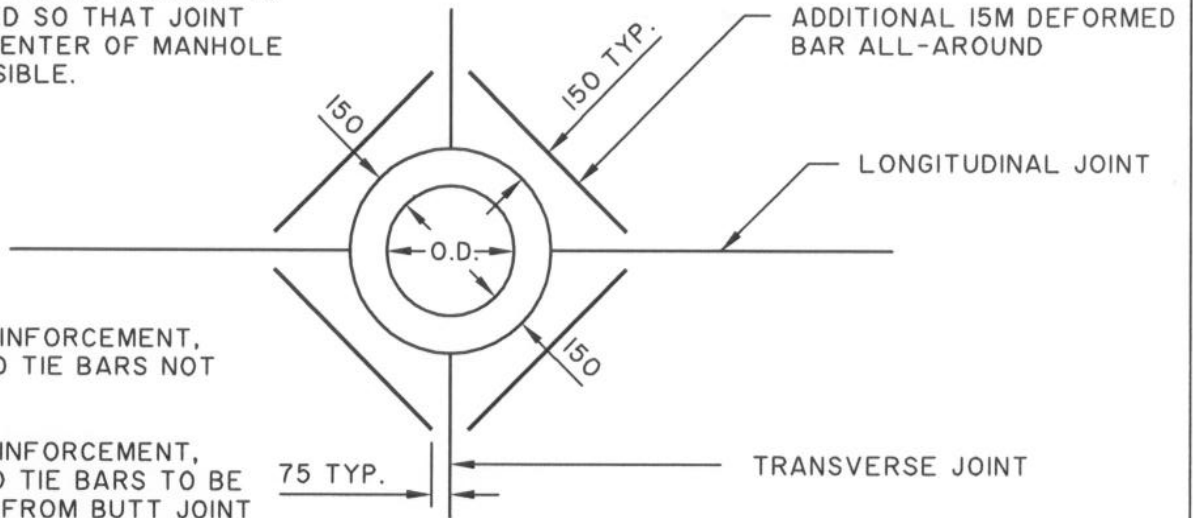


TRANSVERSE JOINT SPACING TO BE ADJUSTED SO THAT JOINT FALLS ON CENTER OF MANHOLE WHERE POSSIBLE.

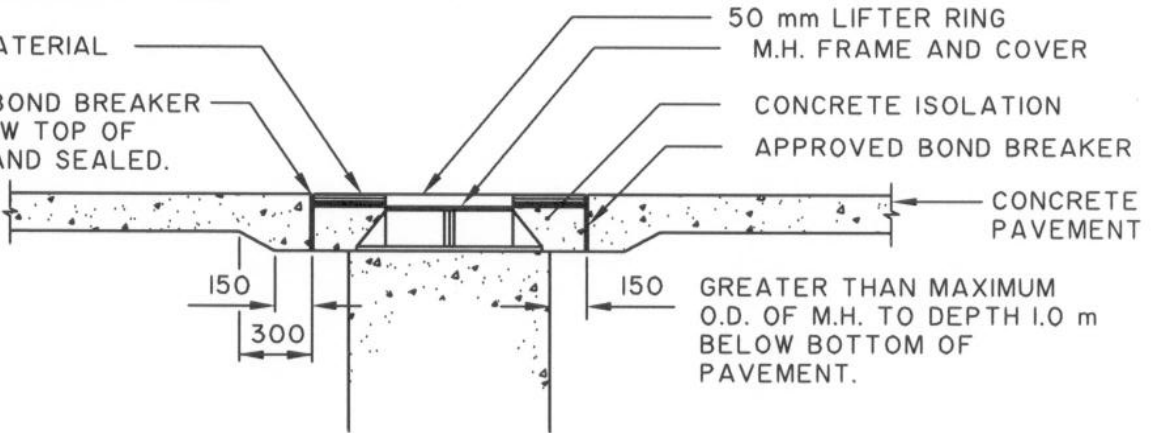


**NOTE:**

1. BAR MAT REINFORCEMENT, DOWELS AND TIE BARS NOT SHOWN
2. BAR MAT REINFORCEMENT, DOWELS AND TIE BARS TO BE 100mm TYP. FROM BUTT JOINT

ASPHALT MATERIAL

APPROVED BOND BREAKER TO BE BELOW TOP OF CONCRETE AND SEALED.



**THE CITY OF WINNIPEG**  
PUBLIC WORKS DEPARTMENT

Reference Spec. No.  
CW 3310

Revisions

No.	Date	Description	By
1.	JAN 03	GENERAL REVISION	lwb

**CATCHBASIN  
AND  
MANHOLE ISOLATION DETAIL  
( NEW PAVEMENTS )**

Designed By: L.S.W.L./K.T	Drawn By: A.R.	Scale : <b>N.T.S.</b>
Checked By: D.R.K.	Date: 03-01-31	Drawing No.
Approved: SURFACE WORKS COMMITTEE		<b>SD-220A</b>